

RAPALA®



| | | | | | | | |
|-----------------------------|-----|---------------------------------|----|------------------------------------|----|-----------------------------|-------|
| • BX Brat..... | 10 | • Flat Rap..... | 57 | • OG Tiny 4..... | 5 | • Shad Rap..... | 47-48 |
| • BX Mid Brat..... | 10 | • Glass Shad Rap..... | 50 | • Original Floating..... | 55 | • Shad Dancer..... | 45 |
| • BX Big Brat..... | 10 | • Husky Jerk..... | 61 | • Rap-V Blade..... | 42 | • Shad Rap RS..... | 53 |
| • BX Jointed Minnow..... | 15 | • Husky Magnum..... | 38 | • Rattlin' Rapala..... | 43 | • Shadow Rap..... | 19 |
| • BX Jointed Shad..... | 16 | • Jigging Rap..... | 79 | • Rippin' Rap..... | 44 | • Shadow Rap Deep..... | 19 |
| • BX Minnow..... | 11 | • Jigging Shad Rap..... | 80 | • RipStop..... | 18 | • Shadow Rap Shad..... | 20 |
| • BX Swimmer..... | 12 | • Jigging Shadow Rap..... | 77 | • RipStop Deep..... | 18 | • Shadow Rap Shad Deep..... | 20 |
| • BX Waking Minnow..... | 13 | • Jointed..... | 56 | • Scatter Rap Countdown..... | 68 | • Shallow Shad Rap..... | 49 |
| • Countdown..... | 58 | • Jointed Deep Husky Jerk..... | 63 | • Scatter Rap Crank..... | 65 | • Skitter Pop..... | 40 |
| • Countdown Elite..... | 60 | • Jointed Shad Rap..... | 51 | • Scatter Rap Deep Husky Jerk..... | 71 | • Skitter Prop..... | 40 |
| • Deep Tail Dancer..... | 64 | • Jointed Shallow Shad Rap..... | 52 | • Scatter Rap Glass Shad..... | 66 | • Skitter Walk..... | 39 |
| • Down Deep Husky Jerk..... | 62 | • Magnum..... | 37 | • Scatter Rap Jointed..... | 70 | • Skitter V..... | 27 |
| • DT (Dives-To) Series..... | 7-8 | • Mini Fat Rap..... | 74 | • Scatter Rap Minnow..... | 69 | • Slab Rap..... | 82 |
| • DT Fat..... | 9 | • OG Rocco 5..... | 4 | • Scatter Rap Shad..... | 67 | • Snap Rap..... | 81 |
| • Fat Rap..... | 58 | • OG Slim 6..... | 6 | • Scatter Rap Tail Dancer..... | 72 | • Super Shad Rap..... | 54 |



NEW



OTT'S GARAGE SERIES OG ROCCO™ 5

From a passion of bait building as a childhood hobby to customizing lures as a professional angler, the OG Series® is born of the sawdust from Ott DeFoe's Garage. The Rapala® OG Rocco™ is a buoyant, round balsa bait with a square circuit board lip. Highly castable with medium rolling action, deflects off cover & backs out of sticky situations.

| | | | | |
|--|---|--------------------------|----------------------------------|--|
| CONSTRUCTION | FEATURES | ACTION | TARGET SPECIES | TERMINAL |
| Premium Balsa Wood Square Circuit Board Lip | Silent/Non-Rattling Round Body, Floating | Medium Rolling Action | Bass/Multi-Species Freshwater | VMC® Black Nickel 1X Strong Hybrid Treble Hooks |



SPECIFICATIONS/COLORS

| Model No. | Running Depth | Body Length | Weight | Hooks | BCTS | BRM | CBK | CCW | CGSD | CRTBC | CTSD | DCW | GGSD | HCGSD | HSD | RCW | RTBC | S | TXS |
|--------------|---------------|-------------|---------|----------|------|-----|-----|-----|------|-------|------|-----|------|-------|-----|-----|------|---|-----|
| OGR05 | 5' | 2-1/2" | 3/8 oz. | Two No.4 | • | • | • | • | • | • | • | • | • | • | • | • | • | • | • |



OTT'S GARAGE SERIES OG TINY™ 4

| | | | | |
|--|---|--|---|---|
| CONSTRUCTION Premium Balsa Wood Circuit Board Lip | FEATURES Silent/Non-Rattling Flat-Sided Body, Floating | ACTION Tight Wobble Finesse-like Action | TARGET SPECIES Bass/Multi-Species Freshwater | TERMINAL VMC® Black Nickel IX Strong Hybrid Treble Hooks |
|--|---|--|---|---|



BGSD
Big Shad



BRM
Bream



CCW
Classic Craw



CGSD
Copper Green
Shad



COS
Coosa Special



CRTBC
Chartreuse
Rootbeer Crawdad



CTSD
Citrus Shad



CW
Crawdad



DCW
Dark Brown
Crawdad



GGSD
Green Gizzard
Shad



HCGSD
Hot Copper
Green Shad



HSD
Helsinki Shad



MCC
Mossy Chartreuse
Crawdad



P
Perch



RCW
Red Crawdad



RSL
Live River Shad



RTBC
Rootbeer Crawdad



S
Silver



SD
Shad

SPECIFICATIONS/COLORS

| Model No. | Running Depth | Body Length | Weight | Hooks | BGSD | BRM | CCW | CGSD | COS | CRTBC | CTSD | CW | DCW | GGSD | HCGSD | HSD | MCC | P | RCW | RSL | RTBC | S | SD |
|--------------|---------------|-------------|----------|-----------|------|-----|-----|------|-----|-------|------|----|-----|------|-------|-----|-----|---|-----|-----|------|---|----|
| OGT04 | 4' | 2-1/4" | 5/16 oz. | Two No. 5 | • | • | • | • | • | • | • | • | • | • | • | • | • | • | • | • | • | • | • |



OTT'S GARAGE SERIES OG SLIM® 6

CONSTRUCTION
Premium Balsa Wood
Circuit Board Lip

FEATURES
Silent/Non-Rattling
Flat Sided Body, Floating

ACTION
Medium Wobble and
Tight Side-to-Side Action

TARGET SPECIES
Bass/Multi-Species
Freshwater

TERMINAL
VMC® Black Nickel 1X
Strong Hybrid Treble Hooks



SPECIFICATIONS / COLORS

| Model No. | Running Depth | Body Length | Weight | Hooks | BGSD | BRM | CCW | CGSD | COS | CRTBC | CTSD | CW | DCW | GGSD | HCGSD | HSD | MCC | P | RCW | RSL | RTBC | S | SD |
|--------------|---------------|-------------|---------|-----------|------|-----|-----|------|-----|-------|------|----|-----|------|-------|-----|-----|---|-----|-----|------|---|----|
| OGS06 | 6' | 2-3/4" | 1/2 oz. | Two No. 3 | • | • | • | • | • | • | • | • | • | • | • | • | • | • | • | • | • | • | • |



ONLY AVAILABLE IN DTMSS20





DT[®] FAT

| | | | | |
|--|---|--|----------------------------------|---|
| CONSTRUCTION | FEATURES | ACTION | TARGET SPECIES | TERMINAL |
| Premium Balsa Wood Custom Square Lip Design | Fat Body Profile Silent/Non-Rattling | Shallow Running Wide Rolling Action, Floating | Bass/Multi-Species Freshwater | VMC [®] Black Nickel Round Bend Hooks |



SPECIFICATIONS / COLORS

| Model No. | Running Depth | Body Length | Weight | Hooks | CSD | DMN | HM | HSD | OLSL | PNGN | S | SMSH |
|----------------|---------------|-------------|---------|-----------|-----|-----|----|-----|------|------|---|------|
| DTFAT03 | 3' | 2-1/2" | 1/2 oz. | Two No. 4 | • | • | • | • | • | • | • | • |

* **IKE'S CUSTOM INK COLOR** Color pattern designed by Mike Iaconelli exclusively for Rapala



BX® BIG BRAT | BX® MID BRAT | BX® BRAT

CONSTRUCTION Balsa Core Copolymer Outer Shell | **FEATURES** Modified Flat Side "V" Cut Belly | **ACTION** Hard Flash, Wild Tracking Kick Outs, Floating | **TARGET SPECIES** Bass/Multi-Species Freshwater | **TERMINAL** VMC® Black Nickel Round Bend Hooks



BX® BRAT SPECIFICATIONS/COLORS

| Model No. | Running Depth | Body Length | Weight | Hooks | BGH | BLZ | BOC | CBN | CSD | CUP | DEL | HAY | HDG | HOB | MSY | PGS | ROC | S | SLP | TAM |
|--------------|---------------|-------------|---------|-----------|-----|-----|-----|-----|-----|-----|-----|-----|-----|-----|-----|-----|-----|---|-----|-----|
| BXB03 | 3' | 2" | 3/8 oz. | Two No. 6 | • | • | • | • | • | • | • | • | • | • | • | • | • | • | • | • |
| BXB06 | 6' | 2" | 3/8 oz. | Two No. 6 | • | • | • | • | • | • | • | • | • | • | • | • | • | • | • | • |

BX® MID BRAT SPECIFICATIONS/COLORS

| | | | | | | | | | | | | | | | | | | | | |
|---------------|----|--------|----------|-----------|---|---|---|---|---|---|---|---|---|---|---|---|---|---|---|---|
| BXMB05 | 5' | 2-1/2" | 7/16 oz. | Two No. 4 | • | • | • | • | • | • | • | • | • | • | • | • | • | • | • | • |
|---------------|----|--------|----------|-----------|---|---|---|---|---|---|---|---|---|---|---|---|---|---|---|---|

BX® BIG BRAT SPECIFICATIONS/COLORS

| | | | | | | | | | | | | | | | | | | | | |
|---------------|----|--------|---------|-----------|---|---|---|---|---|---|---|---|---|---|---|---|---|---|---|---|
| BXBB06 | 6' | 2-3/4" | 3/4 oz. | Two No. 3 | • | • | • | • | • | • | • | • | • | • | • | • | • | • | • | • |
|---------------|----|--------|---------|-----------|---|---|---|---|---|---|---|---|---|---|---|---|---|---|---|---|



BX[®] MINNOW

CONSTRUCTION : Balsa Core
Copolymer Outer Shell

FEATURES : Natural Minnow Profile

ACTION : Strong Flash
Floating

TARGET SPECIES : Multi-Species
Freshwater

TERMINAL : VMC[®] Black Nickel
Round Bend Hooks



SPECIFICATIONS / COLORS

| Model No. | Running Depth | Body Length | Weight | Hooks | BBH | BLP | FT | GSH | P | PDS | RT | S | SMT | YP |
|--------------|---------------|-------------|---------|-----------|-----|-----|----|-----|---|-----|----|---|-----|----|
| BXM07 | 2' - 4' | 2-3/4" | 1/4 oz. | Two No. 6 | • | • | • | • | • | • | • | • | • | • |
| BXM10 | 3' - 5' | 4" | 3/8 oz. | Two No. 4 | • | • | • | • | • | • | • | • | • | • |



BX[®] SWIMMER

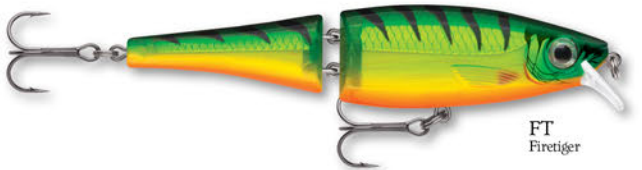
| | | | | |
|-------------------------------------|----------------------------------|--------------------------------|-----------------------------|---|
| CONSTRUCTION | FEATURES | ACTION | TARGET SPECIES | TERMINAL |
| Balsa Core Copolymer Outer Shell | Double Hinge Articulated Body | Kicking Action Slow Sinking | Multi-Species Freshwater | VMC [®] Black Nickel Round Bend Hooks |



BBH
Blue Back Herring



BLP
Blue Pearl



FT
Firetiger



GSH
Gold Shiner



P
Perch



PDS
Purpledescent



RT
Rainbow Trout



S
Silver



SMT
Smelt



YP
Yellow Perch

SPECIFICATIONS / COLORS

| Model No. | Running Depth | Body Length | Weight | Hooks | BBH | BLP | FT | GSH | P | PDS | RT | S | SMT | YP |
|--------------|---------------|-------------|---------|-----------|-----|-----|----|-----|---|-----|----|---|-----|----|
| BXS12 | 4' - 6' | 4-3/4" | 3/4 oz. | Two No. 3 | • | • | • | • | • | • | • | • | • | • |



BX[®] WAKING MINNOW

| | | | | |
|-------------------------------------|------------------------------|--|-----------------------------|---|
| CONSTRUCTION | FEATURES | ACTION | TARGET SPECIES | TERMINAL |
| Balsa Core Copolymer Outer Shell | Creates Huge Surface Wake | Dynamic Flashing Rolling Action, Floating | Multi-Species Freshwater | VMC [®] Black Nickel Round Bend Hooks |



BBH
Blue Back
Herring



FT
Firetiger



GSH
Gold Shiner



PDS
Purplelescent



PGS
Pearl Grey Shiner



SDW
Shadow



SMT
Smelt



YP
Yellow Perch

SPECIFICATIONS / COLORS

| Model No. | Running Depth | Body Length | Weight | Hooks | BBH | FT | GSH | PDS | PGS | SDW | SMT | YP |
|---------------|---------------|-------------|---------|-------------|-----|----|-----|-----|-----|-----|-----|----|
| BXWM13 | Topwater | 5-1/4" | 3/4 oz. | Three No. 5 | • | • | • | • | • | • | • | • |



Bob Downey - Rapala Pro Angler



BX[®] JOINTED MINNOW

| | | | | |
|--|---|---|--|--|
| CONSTRUCTION Balsa Core Copolymer Outer Shell | FEATURES Articulated Minnow Body Profile | ACTION Kicking Action Floating | TARGET SPECIES Multi-Species Freshwater | TERMINAL VMC [®] Black Nickel Round Bend Hooks |
|--|---|---|--|--|



SPECIFICATIONS / COLORS

| Model No. | Running Depth | Body Length | Weight | Hooks | BBH | BLP | FT | GSH | P | PDS | RT | S | SMT | YP |
|---------------|---------------|-------------|----------|-----------|-----|-----|----|-----|---|-----|----|---|-----|----|
| BXJM09 | 6' - 8' | 3-1/2" | 5/16 oz. | Two No. 6 | • | • | • | • | • | • | • | • | • | • |



BX[®] JOINTED SHAD

| | | | | |
|-------------------------------------|----------------------------------|----------------------------|-----------------------------|---|
| CONSTRUCTION | FEATURES | ACTION | TARGET SPECIES | TERMINAL |
| Balsa Core Copolymer Outer Shell | Articulated Shad Body Profile | Kicking Action Floating | Multi-Species Freshwater | VMC [®] Black Nickel Round Bend Hooks |



SPECIFICATIONS / COLORS

| Model No. | Running Depth | Body Length | Weight | Hooks | BBH | BLP | FT | GSH | P | PDS | RT | S | SMT | YP |
|----------------|---------------|-------------|---------|-----------|-----|-----|----|-----|---|-----|----|---|-----|----|
| BXJSD06 | 4' - 6' | 2-1/2" | 1/4 oz. | Two No. 8 | • | • | • | • | • | • | • | • | • | • |



RipStop 12

RipStop 12

RipStop 12



RIPSTOP® | RIPSTOP® DEEP

| | | | | |
|--|---|--|--|--|
| CONSTRUCTION Durable Plastic Body, Internal Scales Metalized Flash Foil | FEATURES Hard Plastic Boot Tail Slow Rise on Pause | ACTION Fast Ripping Flash Hard Stopping, Suspending | TARGET SPECIES Bass, Multi-Species Freshwater | TERMINAL VMC® Black Nickel Round Bend Hooks |
|--|---|--|--|--|



RIPSTOP® SPECIFICATIONS/COLORS

| Model No. | Running Depth | Body Length | Weight | Hooks | AS | CBN | CLN | EB | FT | GOBY | HDI | HER | MBS | MKY | PD | PEL | S | SNP | YP |
|--------------|---------------|-------------|---------|-------------|----|-----|-----|----|----|------|-----|-----|-----|-----|----|-----|---|-----|----|
| RPS09 | 3' - 4' | 3-1/2" | 1/4 oz. | No. 6 & 7 | • | • | • | • | • | • | • | • | • | • | • | • | • | • | • |
| RPS12 | 4' - 5' | 4-3/4" | 1/2 oz. | Three No. 5 | • | • | • | • | • | • | • | • | • | • | • | • | • | • | • |

RIPSTOP® DEEP SPECIFICATIONS/COLORS

| | | | | | | | | | | | | | | | | | | | |
|---------------|---------|--------|----------|-------------|---|---|---|---|---|---|---|---|---|---|---|---|---|---|---|
| RPSD09 | 5' - 6' | 3-1/2" | 1/4 oz. | No. 6 & 7 | • | • | • | • | • | • | • | • | • | • | • | • | • | • | • |
| RPSD12 | 4' - 8' | 4-3/4" | 9/16 oz. | Three No. 5 | • | • | • | • | • | • | • | • | • | • | • | • | • | • | • |

US PATENT NUMBER D817438



SHADOW RAP® | SHADOW RAP® DEEP

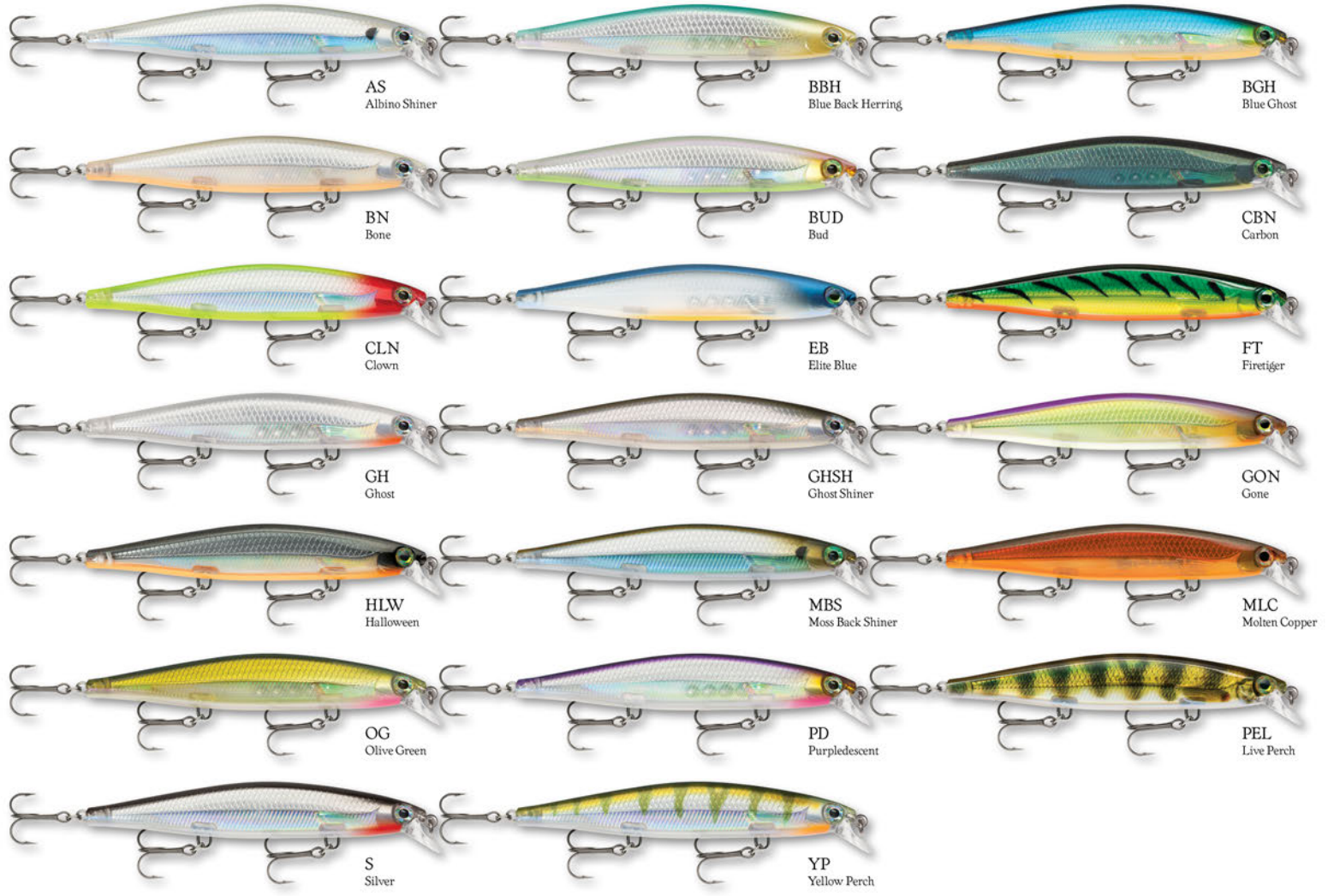
CONSTRUCTION Durable Plastic Body
Internal Scales & Metalized Flash Foil

FEATURES Slow Sinking
Fade on Pause

ACTION Sharp Left & Right Turns
Hard Flash Movement

TARGET SPECIES Bass, Multi-Species
Freshwater

TERMINAL VMC® Fine Wire Black
Nickel Round Bend Hooks



SHADOW RAP® SPECIFICATIONS/COLORS

| Model No. | Running Depth | Body Length | Weight | Hooks | AS | BBH | BGH | BN | BUD | CBN | CLN | EB | FT | GH | GSH | GON | HLW | MBS | MLC | OG | PD | PEL | S | YP |
|--------------|---------------|-------------|----------|-------------|----|-----|-----|----|-----|-----|-----|----|----|----|-----|-----|-----|-----|-----|----|----|-----|---|----|
| SDRII | 2' - 4' | 4-3/8" | 7/16 oz. | Three No. 6 | • | • | • | • | • | • | • | • | • | • | • | • | • | • | • | • | • | • | • | • |

SHADOW RAP® DEEP SPECIFICATIONS/COLORS

| | | | | | | | | | | | | | | | | | | | | | | | | |
|---------------|---------|--------|----------|-------------|---|---|---|---|---|---|---|---|---|---|---|---|---|---|---|---|---|---|---|---|
| SDRDII | 4' - 8' | 4-3/8" | 7/16 oz. | Three No. 6 | • | • | • | • | • | • | • | • | • | • | • | • | • | • | • | • | • | • | • | • |
|---------------|---------|--------|----------|-------------|---|---|---|---|---|---|---|---|---|---|---|---|---|---|---|---|---|---|---|---|



SHADOW RAP® SHAD | SHADOW RAP® SHAD DEEP

CONSTRUCTION Durable Plastic Body
Internal Scales & Metalized Flash Foil

FEATURES Slow Rise on Pause

ACTION Sharp Left & Right Turns
Hard Flash Movement

TARGET SPECIES Bass, Multi-Species
Freshwater

TERMINAL VMC® Fine Wire Black
Nickel Round Bend Hooks



SHADOW RAP® SHAD SPECIFICATIONS/COLORS

| Model No. | Running Depth | Body Length | Weight | Hooks | AS | BBH | BGH | BN | BUD | CBN | CLN | EB | FT | GH | GSH | GON | HLW | MBS | MLC | OG | PD | PEL | S | YP |
|---------------|---------------|-------------|---------|-----------|----|-----|-----|----|-----|-----|-----|----|----|----|-----|-----|-----|-----|-----|----|----|-----|---|----|
| SDRS09 | 3' - 4' | 3-1/2" | 3/8 oz. | Two No. 6 | • | • | • | • | • | • | • | • | • | • | • | • | • | • | • | • | • | • | • | • |

SHADOW RAP® SHAD DEEP SPECIFICATIONS/COLORS

| | | | | | | | | | | | | | | | | | | | | | | | | |
|----------------|---------|--------|---------|-----------|---|---|---|---|---|---|---|---|---|---|---|---|---|---|---|---|---|---|---|---|
| SDRSD09 | 5' - 6' | 3-1/2" | 3/8 oz. | Two No. 6 | • | • | • | • | • | • | • | • | • | • | • | • | • | • | • | • | • | • | • | • |
|----------------|---------|--------|---------|-----------|---|---|---|---|---|---|---|---|---|---|---|---|---|---|---|---|---|---|---|---|



X-RAP® | X-RAP® DEEP

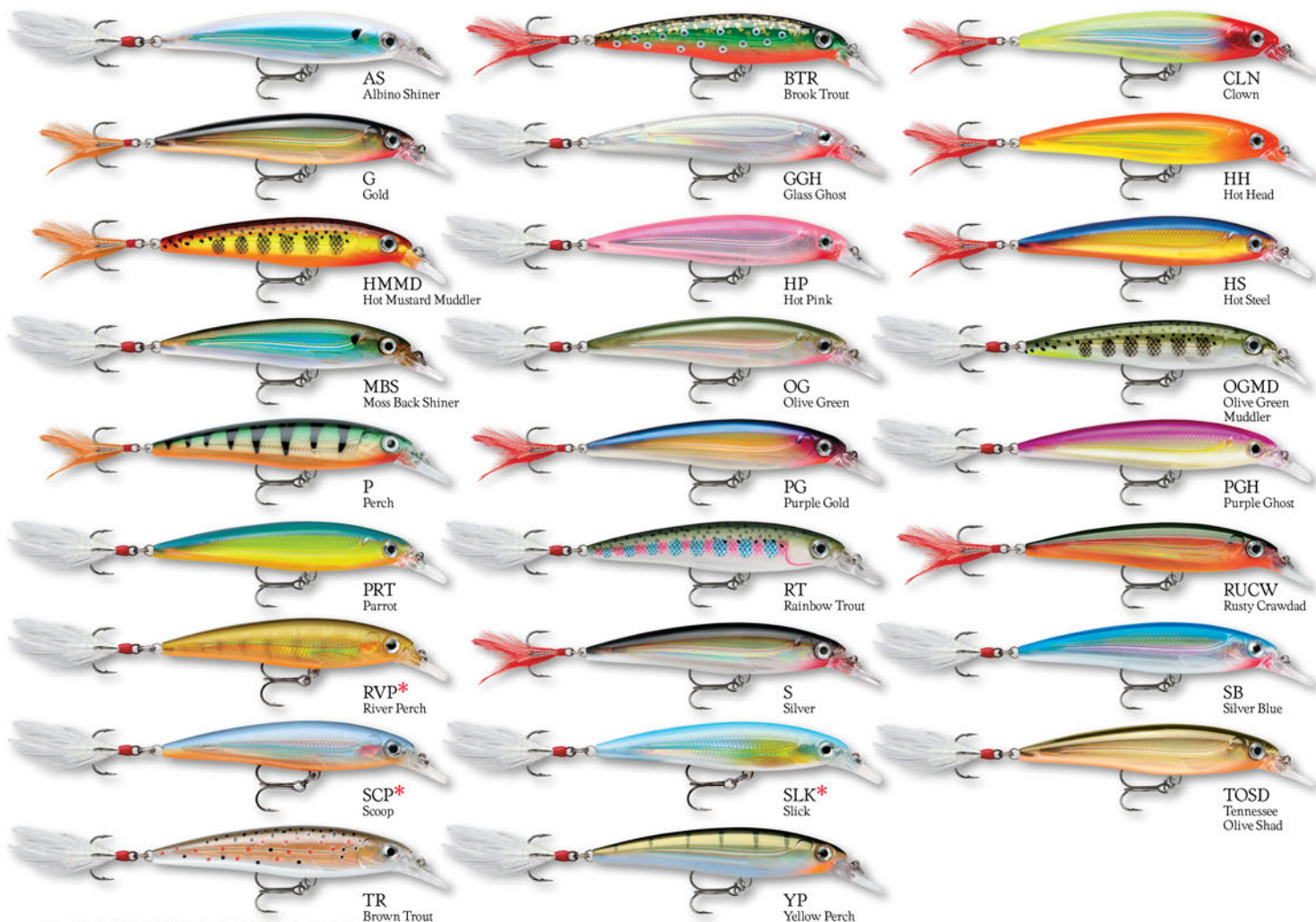
CONSTRUCTION
X-Style Translucent Body
3D Holographic Eyes

FEATURES
Patented Long-Cast System
Internal Flash Foil

ACTION
Slashbait® Action
Suspending on Pause

TARGET SPECIES
Multi-Species
Freshwater

TERMINAL
VMC® Black Nickel Round Bend
Hooks with Flash Feather Tail



X-RAP® SPECIFICATIONS/COLORS

| Model No. | Running Depth | Body Length | Weight | Hooks | AS | BTR | CLN | G | GGH | HH | HMMD | HP | HS | MBS | OG | OGMD | P | PG | PGH | PRT | RT | RUCW | RVP | S | SB | SCP | SLK | TOSD | TR | YP |
|-------------|---------------|-------------|----------|------------|----|-----|-----|---|-----|----|------|----|----|-----|----|------|---|----|-----|-----|----|------|-----|---|----|-----|-----|------|----|----|
| XR04 | 2' - 3' | 1-1/2" | 1/16 oz. | Two No. 12 | - | • | - | • | • | - | - | - | - | - | - | • | - | - | - | - | - | - | - | • | - | - | - | - | • | • |
| XR06 | 3' - 5' | 2-1/2" | 1/8 oz. | Two No. 10 | - | • | - | • | • | - | - | - | - | - | - | • | - | - | - | - | - | - | - | • | - | - | - | - | • | • |
| XR08 | 3' - 5' | 3-1/8" | 1/4 oz. | Two No. 6 | • | • | • | • | • | • | • | • | • | • | • | • | • | • | • | • | • | • | • | • | • | • | • | • | • | • |
| XR10 | 4' - 6' | 4" | 7/16 oz. | No. 4 & 5 | • | - | • | • | • | • | • | • | • | • | • | - | • | - | - | - | - | - | • | • | • | • | • | - | - | • |
| XR12 | 4' - 8' | 4-3/4" | 3/4 oz. | Two No. 2 | - | - | • | • | • | • | • | • | • | • | • | • | - | - | - | - | - | - | • | • | • | • | - | - | - | • |

XR04 DOES NOT HAVE INTERNAL LONG-CAST SYSTEM

X-RAP® DEEP SPECIFICATIONS/COLORS

| | | | | | | | | | | | | | | | | | | | | | | | | | | | | | | |
|-------------|----------|--------|----------|-----------|---|---|---|---|---|---|---|---|---|---|---|---|---|---|---|---|---|---|---|---|---|---|---|---|---|---|
| XR08 | 5' - 10' | 3-1/8" | 1/4 oz. | Two No. 6 | - | - | • | - | • | - | - | - | - | - | - | • | - | - | - | - | - | - | - | • | - | - | - | - | - | - |
| XR10 | 6' - 15' | 4" | 7/16 oz. | No. 4 & 5 | - | - | • | - | • | - | - | - | - | - | - | • | - | - | - | - | - | - | • | • | • | • | - | - | - | • |

* **IKE'S CUSTOM INK COLOR** Color pattern designed by Mike Iaconelli exclusively for Rapala

US PATENT NUMBER 6,609,326



X-RAP® SHAD | X-RAP® SHAD SHALLOW

CONSTRUCTION : X-Style Translucent Body
3D Holographic Eyes

FEATURES : Rattle & Long-Cast Systems
Internal Flash Foil

ACTION : Slashbait® Action
Suspending on Pause

TARGET SPECIES : Multi-Species
Freshwater

TERMINAL : VMC® Black Nickel Round Bend
Hooks with Flash Feather Tail



X-RAP® SHAD SPECIFICATIONS/COLORS

| Model No. | Running Depth | Body Length | Weight | Hooks | CLN | FT | G | GGH | HH | HS | OG | P | PD | S | SB | YP |
|--------------|---------------|-------------|----------|-----------|-----|----|---|-----|----|----|----|---|----|---|----|----|
| XRS06 | 6' - 11' | 2-1/2" | 5/16 oz. | No. 5 & 6 | • | • | • | • | • | • | • | • | • | • | • | • |

X-RAP® SHAD SHALLOW SPECIFICATIONS/COLORS

| | | | | | | | | | | | | | | | | |
|---------------|---------|--------|----------|-----------|---|---|---|---|---|---|---|---|---|---|---|---|
| XRSH06 | 2' - 4' | 2-1/2" | 5/16 oz. | No. 5 & 6 | • | • | • | • | - | - | • | • | • | • | • | • |
|---------------|---------|--------|----------|-----------|---|---|---|---|---|---|---|---|---|---|---|---|

US PATENT NUMBER 6,609,326



X-RAP® JOINTED SHAD

CONSTRUCTION
X-Style Translucent Body
3D Holographic Eyes

FEATURES
Articulated Body
Neutrally Buoyant

ACTION
Swimming Action at Slow
Speeds, Slight Rise on Pause

TARGET SPECIES
Multi-Species
Freshwater & Saltwater

TERMINAL
VMC® Black Nickel
Round Bend Hooks



BNK
Bunker



BTO
Bonito



CLN
Clown



G
Gold



HH
Hot Head



HS
Hot Steel



P
Perch



S
Silver



SB
Silver Blue



YP
Yellow Perch

SPECIFICATIONS / COLORS

| Model No. | Running Depth | Body Length | Weight | Hooks | BNK | BTO | CLN | G | HH | HS | P | S | SB | YP |
|--------------|---------------|-------------|-----------|-------------|-----|-----|-----|---|----|----|---|---|----|----|
| XJS13 | 4' - 8' | 5-1/4" | 1-5/8 oz. | Two No. 3/0 | • | • | • | • | • | • | • | • | • | • |



X-RAP® COUNTDOWN®

| | | | | |
|---|---|--|-----------------------------|---------------------------------------|
| CONSTRUCTION | FEATURES | ACTION | TARGET SPECIES | TERMINAL |
| X-Style Translucent Body 3D Holographic Eyes | Consistent Depth Control Sinks 1-Foot Per Second | Strong Rolling Action Flutter on Drop | Multi-Species Freshwater | VMC® Black Nickel Round Bend Hooks |



CLN
Clown



G
Gold



GGH
Glass Ghost



OG
Olive Green



RT
Rainbow Trout



S
Silver



SB
Silver Blue



YP
Yellow Perch

SPECIFICATIONS / COLORS

| Model No. | Running Depth | Body Length | Weight | Hooks | CLN | G | GGH | OG | RT | S | SB | YP |
|---------------|---------------|-------------|---------|------------|-----|---|-----|----|----|---|----|----|
| XRCD05 | 2' - 4' | 2" | 1/8 oz. | Two No. 10 | • | • | • | • | • | • | • | • |
| XRCD07 | 3' - 5' | 2-3/4" | 3/8 oz. | Two No. 6 | • | • | • | • | • | • | • | • |



X-RAP[®] POP

CONSTRUCTION : X-Style Translucent Body
3D Holographic Eyes

FEATURES : Deep Cupped Lip, Rattle
Thin, Flat Chin, Long-Casting

ACTION : Floating, Topwater
Popper/Chugger

TARGET SPECIES : Bass, Multi-Species
Freshwater & Saltwater

TERMINAL : VMC[®] Black Nickel Round Bend
Hooks with Flash Feather Tail



SPECIFICATIONS/COLORS

| Model No. | Running Depth | Body Length | Weight | Hooks | CGH | CLN | MBS | PGS | S | YP |
|--------------|---------------|-------------|---------|-----------|-----|-----|-----|-----|---|----|
| XRP07 | Topwater | 2-3/4" | 3/8 oz. | Two No. 5 | • | • | • | • | • | • |



X-RAP[®] PROP

CONSTRUCTION : X-Style Translucent Body
3D Holographic Eyes

FEATURES : Counter-Rotating Stainless
Steel Props, Long-Casting

ACTION : Floating, Topwater Buzzer
Ripped Aggressive, Twitched Finesse

TARGET SPECIES : Bass, Multi-Species
Freshwater & Saltwater

TERMINAL : VMC[®] Black Nickel Round Bend
Hooks with Flash Feather Tail



SPECIFICATIONS/COLORS

| Model No. | Running Depth | Body Length | Weight | Hooks | BCHO | FLG | GO | HT | MBS | PGS | S | YP |
|---------------|---------------|-------------|---------|---------------|------|-----|----|----|-----|-----|---|----|
| XRPR11 | Topwater | 4-3/8" | 3/8 oz. | No. 5 & Two 6 | • | • | • | • | • | • | • | • |



X-RAP® SUBWALK™

CONSTRUCTION X-Style Translucent Body
3D Holographic Eyes

FEATURES Unique Lateral Tail Fin
Internal Rattle System

ACTION Subsurface Walk-the-Dog
Slow Sinking Glide & Drop

TARGET SPECIES Multi-Species
Freshwater & Saltwater

TERMINAL VMC® Black Nickel Round Bend
Hooks with Flash Feather Tail



SPECIFICATIONS / COLORS

| Model No. | Running Depth | Body Length | Weight | Hooks | BNC | CGH | CLN | G | GGH | HP | MBS | OG | PS | RGH | S | SB |
|---------------|---------------|-------------|---------|-----------|-----|-----|-----|---|-----|----|-----|----|----|-----|---|----|
| XRSB09 | 0' - 2' | 3-1/2" | 5/8 oz. | No. 3 & 4 | • | • | • | • | • | • | • | • | • | • | • | • |
| XRSB15 | 1' - 4' | 6" | 2 oz. | No. 3/0 | • | - | • | • | • | - | • | • | • | - | • | • |

NO FEATHER



V-shape belly design allows this lure to cut quick with a simple snap of the rod tip.

SKITTER V

CONSTRUCTION Translucent Body
Holographic Flash Foil

FEATURES Cadence Rattle
3D Holographic Eyes

ACTION Quick Turning
Walk-the-Dog, Floating

TARGET SPECIES Inshore & Freshwater

TERMINAL VMC® Black Nickel Round Bend Hooks



BN Bone
CH Chrome
G Gold
GGH Glass Ghost
GHC Ghost Clear
HGBN Holographic Bone
HP Hot Pink
PCH Pure Chrome
S Silver



BNC Bone Chartreuse
CPO Clear Pale Olive
GCH Gold Chrome
GHBN Ghost Bone
GO Gold Olive
HO Hot Olive
HPR Hot Purple
RGH Red Ghost
WBN Wish Bone

SPECIFICATIONS / COLORS

| Model No. | Running Depth | Body Length | Weight | Hooks | BN | BNC | CH | CPO | G | GCH | GGH | HGBN | GHC | GO | HGBN | HO | HP | HPR | PCH | RGH | S | WBN |
|-----------|---------------|-------------|---------|-------------|----|-----|----|-----|---|-----|-----|------|-----|----|------|----|----|-----|-----|-----|---|-----|
| SKV10 | Topwater | 4" | 1/2 oz. | Two No. 4 | • | • | • | • | • | • | • | • | • | • | • | • | • | • | • | • | • | • |
| SKV13 | Topwater | 5-1/4" | 1 oz. | Three No. 3 | • | • | • | • | • | • | • | • | • | • | • | • | • | • | • | • | • | • |

US PATENT NUMBER D787012



X-RAP® SALTWATER SUBWALK™

| | | | | |
|--|---|--|--|--|
| CONSTRUCTION X-Style Translucent Body 3D Holographic Eyes | FEATURES Rattle, Lateral Tail Fin Xtreme Holographic Flash | ACTION Wide Sweeping, Subsurface Walk-the-Dog, Slow Sinking | TARGET SPECIES Multi-Species Freshwater & Saltwater | TERMINAL VMC® Coastal Black® 1X Inline Single Hooks |
|--|---|--|--|--|



AS
Albin Shiner



BNC
Bone Chartreuse



BSRD
Blue Sardine



FUS
Fusilier



GGH
Glass Ghost



GO
Gold Olive



HO
Hot Olive



HPR
Hot Purple



MBS
Moss Back
Shiner



MM
Mangrove Minnow



MU
Mullet



OG
Olive Green



PF
Pinfish



PLD
Pilchard



RDB
Red Belly



RGH
Red Ghost



S
Silver

SPECIFICATIONS / COLORS

| Model No. | Running Depth | Body Length | Weight | Hooks | AS | BNC | BSRD | FUS | GGH | GO | HO | HPR | MBS | MM | MU | OG | PF | PLD | RDB | RGH | S | |
|----------------|---------------|-------------|----------|-------------|----|-----|------|-----|-----|----|----|-----|-----|----|----|----|----|-----|-----|-----|---|---|
| SXRSB07 | 0' - 2' | 2-3/4" | 7/16 oz. | Two No. 1/0 | • | • | • | • | • | • | • | • | • | • | • | • | • | • | • | • | • | • |
| SXRSB09 | 0' - 2' | 3-1/2" | 3/4 oz. | Two No. 3/0 | • | • | • | • | • | • | • | • | • | • | • | • | • | • | • | • | • | • |





X-RAP® TWITCHIN' MINNOW

CONSTRUCTION
X-Style Translucent Body
3D Holographic Eyes

FEATURES
Aggressive Side-to-Side
Holographic Flash

ACTION
Tight Subsurface Walk-the-Dog
Slow Sinking Glide & Drop

TARGET SPECIES
Multi-Species
Freshwater & Saltwater

TERMINAL
VMC® Coastal Black®
IX Inline Single Hooks



AS
Albino Shiner



BNC
Bone Chartreuse



BSRD
Blue Sardine



FUS
Fusilier



GGH
Glass Ghost



GO
Gold Olive



HO
Hot Olive



HPR
Hot Purple



MBS
Moss Back Shiner



MM
Mangrove Minnow



MU
Mullet



OG
Olive Green



PF
Pinfish



PLD
Pilchard



RDB
Red Belly



RGH
Red Ghost



S
Silver

SPECIFICATIONS / COLORS

| Model No. | Running Depth | Body Length | Weight | Hooks | AS | BNC | BSRD | FUS | GGH | GO | HO | HPR | MBS | MM | MU | OG | PF | PLD | RDB | RGH | S | |
|---------------|---------------|-------------|---------|-------------|----|-----|------|-----|-----|----|----|-----|-----|----|----|----|----|-----|-----|-----|---|---|
| SXRT10 | 1' - 2' | 4" | 1/2 oz. | Two No. 2/0 | • | • | • | • | • | • | • | • | • | • | • | • | • | • | • | • | • | • |





X-RAP® 'TWITCHIN' MULLET

CONSTRUCTION : X-Style Translucent Body
3D Holographic Eyes

FEATURES : Subtle Side-to-Side
Holographic Flash

ACTION : Relaxed Wide Walk-the-Dog
Slow Sinking Glide & Drop

TARGET SPECIES : Multi-Species
Freshwater & Saltwater

TERMINAL : VMC® Coastal Black®
1X Inline Single Hooks



AS
Albino Shiner



BNC
Bone Chartreuse



BSRD
Blue Sardine



FUS
Fusilier



GGH
Glass Ghost



GO
Gold Olive



HO
Hot Olive



HPR
Hot Purple



MBS
Moss Back Shiner



MM
Mangrove Minnow



MU
Mullet



OG
Olive Green



PF
Pinfish



PLD
Pilchard



RDB
Red Belly



RGH
Red Ghost



S
Silver

SPECIFICATIONS/COLORS

| Model No. | Running Depth | Body Length | Weight | Hooks | AS | BNC | BSRD | FUS | GGH | GO | HO | HPR | MBS | MM | MU | OG | PF | PLD | RDB | RGH | S | |
|----------------|---------------|-------------|----------|-------------|----|-----|------|-----|-----|----|----|-----|-----|----|----|----|----|-----|-----|-----|---|---|
| SXRTM06 | 1' - 2' | 2-1/2" | 5/16 oz. | Two No. 1 | • | • | • | • | • | • | • | • | • | • | • | • | • | • | • | • | • | • |
| SXRTM08 | 1' - 2' | 3-1/8" | 7/16 oz. | Two No. 2/0 | • | • | • | • | • | • | • | • | • | • | • | • | • | • | • | • | • | • |





X-RAP® SALTWATER

CONSTRUCTION
X-Style Translucent Body
Holographic Flash Foil

FEATURES
Patented Long-Casting System
3D Holographic Eyes

ACTION
Slashbait® Action
Suspending on Pause

TARGET SPECIES
Multi-Species
Freshwater & Saltwater

TERMINAL
VMC®
Perma Steel® Hooks



BNK
Bunker



BSRD
Blue Sardine



G
Gold



GGH
Glass Ghost



HH
Hot Head



HP
Hot Pink



HPR
Hot Purple



MM
Mangrove Minnow



MU
Mullet



OG
Olive Green



PF
Pinfish



PLD
Pilchard



S
Silver



SBM
Silver Blue Mackerel



SPM
Spotted Minnow

SPECIFICATIONS / COLORS

| Model No. | Running Depth | Body Length | Weight | Hooks | BNK | BSRD | G | GGH | HH | HP | HPR | MM | MU | OG | PF | PLD | S | SBM | SPM |
|--------------|---------------|-------------|-----------|-------------|-----|------|---|-----|----|----|-----|----|----|----|----|-----|---|-----|-----|
| SXR08 | 3' - 5' | 3-1/8" | 1/4 oz. | Two No. 6 | • | • | - | • | - | - | • | • | • | • | • | • | • | • | • |
| SXR10 | 4' - 6' | 4" | 7/16 oz. | Two No. 3 | • | • | - | • | - | - | • | • | • | • | • | • | • | • | • |
| SXR12 | 4' - 8' | 4-3/4" | 3/4 oz. | Two No. 2 | • | • | - | • | - | - | • | • | • | • | • | • | • | • | • |
| SXR14 | 4' - 8' | 5-1/2" | 1-1/2 oz. | Two No. 2/0 | • | • | - | • | - | - | • | • | • | • | • | • | • | • | • |



US PATENT NUMBER 6,609,326



Long-Cast Shallow

Long-Cast

X-RAP® LONG-CAST X-RAP® LONG-CAST SHALLOW

CONSTRUCTION Heavy, Tough X-Style Translucent Body
FEATURES Holographic Foil 3D Holographic Eyes
ACTION Long-Casting, Sinking Flutters on Fall
TARGET SPECIES Multi-Species Freshwater & Saltwater
TERMINAL VMC® Tin Finish 4X Inline Single Hooks



X-RAP® LONG-CAST SPECIFICATIONS / COLORS

| Model No. | Running Depth | Body Length | Weight | Hooks | ANC | AS | BM | BNC | BSRD | CHM | FUS | GGH | GM | GO | HO | MBS | MM | MU | OG | PF | PLD | PM | RDB | RGH | S |
|---------------|---------------|-------------|-----------|-------------|-----|----|----|-----|------|-----|-----|-----|----|----|----|-----|----|----|----|----|-----|----|-----|-----|---|
| SXRL12 | 4' - 5' | 4-3/4" | 1-1/4 oz. | Two No. 3/0 | • | • | • | • | • | • | • | • | • | • | • | • | • | • | • | • | • | • | • | • | • |
| SXRL14 | 4' - 5' | 5-1/2" | 1-7/8 oz. | Two No. 5/0 | • | • | • | • | • | • | • | • | • | • | • | • | • | • | • | • | • | • | • | • | • |

X-RAP® LONG-CAST SHALLOW SPECIFICATIONS / COLORS

| | | | | | | | | | | | | | | | | | | | | | | | | | |
|----------------|---------|--------|-----------|-------------|---|---|---|---|---|---|---|---|---|---|---|---|---|---|---|---|---|---|---|---|---|
| SXRLS12 | 1' - 2' | 4-3/4" | 1-1/4 oz. | Two No. 3/0 | - | • | - | • | • | - | • | • | - | • | • | • | • | • | • | • | • | • | • | • | • |
|----------------|---------|--------|-----------|-------------|---|---|---|---|---|---|---|---|---|---|---|---|---|---|---|---|---|---|---|---|---|

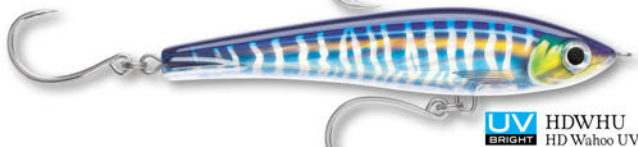
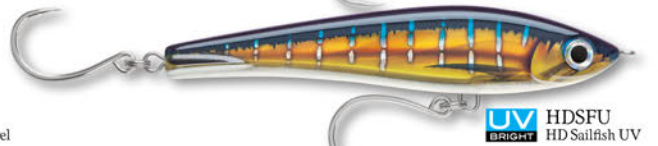
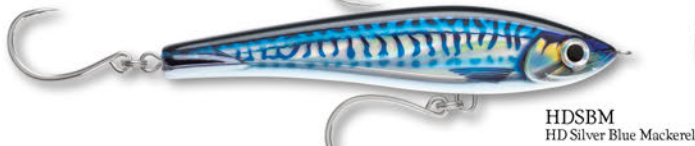
NEW



X-RAP[®] MAGNUM[®] STICK

Weighted for long-casts and designed for fast, aggressive retrieves, the X-Rap[®] Magnum[®] Stick 17 swims in wide S curves on the retrieve. The horizontal line tie allows for a wider swimming action. Heavy-duty through wire construction withstands savage big blue water predators. Once stopped, the stick bait dives head-down with a fish triggering flutter. Durable plastic body in either translucent with internal scalloped foil or chromed finishes. Even the slightest motion creates a life-like flash.

| | | | | |
|--------------------------------------|----------------------------------|---|----------------------------|---|
| CONSTRUCTION | FEATURES | ACTION | TARGET SPECIES | TERMINAL |
| Heavy-Duty Through Wire Construction | Horizontal Line Tie Long-Casting | Wide S Curves on Retrieve Dives Head-Down with Flutter | Multi-Species Saltwater | VMC [®] Tin Finish 4X Inline Single Hooks |



Rapala Coastal

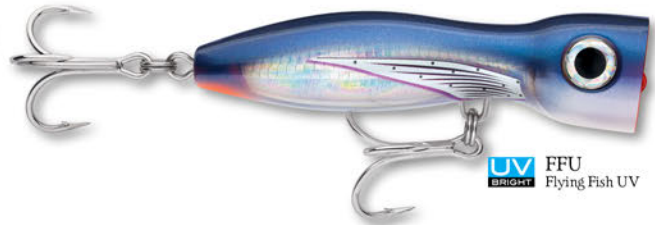
SPECIFICATIONS/COLORS

| | | | | | | | | | | | | | | | | |
|-------------------|---------------|-------------|-----------|-------------|-----|--------|-------|------|-------|-------|-------|-------|-------|----|-----|-----|
| Model No. | Running Depth | Body Length | Weight | Hooks | ANC | HDBSRD | HDBTO | HDGH | HDHPU | HDRHU | HDSBM | HDSFU | HDWHU | MU | PHV | PLD |
| XR MAGST17 | Variable | 6-3/4" | 3-1/8 oz. | Two No. 6/0 | • | • | • | • | • | • | • | • | • | • | • | • |



X-RAP[®] MAGNUM XPLODE[®]

| | | | | |
|--|---|-------------------------------------|--|--|
| CONSTRUCTION | FEATURES | ACTION | TARGET SPECIES | TERMINAL |
| Thick-Walled ABS Body Through Wire Construction | Deep-Cupped Face Low Position Line Tie | Fast Sweeping Topwater Explosion | Big Game/Multi-Species Freshwater & Saltwater | VMC [®] 6X Spark Point [®] Hooks Heavy Duty Split Rings |



SPECIFICATIONS / COLORS

| Model No. | Running Depth | Body Length | Weight | Hooks | AYU | BSRD | D | FFU | HWHU | MU |
|-------------------|---------------|-------------|------------|-------------|-----|------|---|-----|------|----|
| XRMAGXPI30 | Topwater | 5-1/4" | 2-3/16 oz. | Two No. 2/0 | • | • | • | • | • | • |
| XRMAGXPI70 | Topwater | 6-3/4" | 5 oz. | Two No. 5/0 | • | • | • | • | • | • |

Rapala
Coastal



X-RAP® MAGNUM®

CONSTRUCTION : X-Style Translucent Body Through Wire Construction
FEATURES : Deep Diving Lip Preset Diving Depths
ACTION : Deep-Diving, Slow Rising Unassisted Runs to 13 knots
TARGET SPECIES : Multi-Species Saltwater
TERMINAL : VMC® 4X Perma Steel® Hooks

SPECIFICATIONS/COLORS

| Model No. | Running Depth | Body Length | Weight | Hooks | BNK | BSRD | BTO | D | FT | GGH | GGM | HH | HPU | HUU | LLU | PM | RH | RHU | S | SBM | SFC | SFU | SPM | WHU | YFT | YFU |
|----------------|---------------|-------------|-----------|-------------|-----|------|-----|---|----|-----|-----|----|-----|-----|-----|----|----|-----|---|-----|-----|-----|-----|-----|-----|-----|
| XRMAG10 | 10' | 4-3/8" | 3/4 oz. | Two No. 2 | • | • | • | • | • | • | • | • | • | • | • | • | • | • | • | • | • | • | • | • | • | • |
| XRMAG15 | 15' | 4-3/4" | 1-1/8 oz. | Two No. 1/0 | • | • | • | • | • | • | • | • | • | • | • | • | • | • | • | • | • | • | • | • | • | • |
| XRMAG20 | 20' | 5-1/2" | 1-5/8 oz. | Two No. 2/0 | • | • | • | • | • | • | • | • | • | • | • | • | • | • | • | • | • | • | • | • | • | • |
| XRMAG30 | 30' | 6-1/4" | 2-1/2 oz. | Two No. 4/0 | • | • | • | • | • | • | • | • | • | • | • | • | • | • | • | • | • | • | • | • | • | • |
| XRMAG40 | 40' | 7" | 3-3/8 oz. | Two No. 5/0 | • | • | • | • | • | • | • | • | • | • | • | • | • | • | • | • | • | • | • | • | • | • |





BNK
Bunker



BSRD
Blue Sardine



BTO
Bonito



D
Dorado



FT
Firetiger



GGH
Glass Ghost



GGM
Gold Green Mackerel



HH
Hot Head



UV
BRIGHT HPU
Hot Pink UV



UV
BRIGHT HUU
Hussar UV



UV
BRIGHT LLU
Lime Light UV



PM
Purple Mackerel



RH
Red Head



UV
BRIGHT RHU
Red Head UV



S
Silver



SBM
Silver Blue Mackerel



SFC
Silver Fluor. Chart.



UV
BRIGHT SFU
Sailfish UV



SPM
Spotted Minnow



UV
BRIGHT WHU
Wahoo UV



YFT
Yellowfin Tuna



UV
BRIGHT YFU
Yellowfin Fusilier UV



MAGNUM®

| | | | | |
|--|--|--|---|---|
| CONSTRUCTION Super Tough Abachi Wood FMAG has Through Wire Construction | FEATURES Floating or Sinking Anti-Broach Design | ACTION Classic Rapala® "Wounded-Minnow" | TARGET SPECIES Freshwater & Saltwater Big Game | TERMINAL VMC® Perma Steel® Hooks |
|--|--|--|---|---|



SPECIFICATIONS/COLORS

| Model No. | Running Depth | Body Length | Weight | Hooks | D | FT | GFR | GM | MU | PM | RH | S | SM | SRD |
|----------------|---------------|-------------|-----------|-------------|---|----|-----|----|----|----|----|---|----|-----|
| FMAG18 | 9' - 11' | 7" | 1-1/2 oz. | Two No. 4/0 | • | • | • | • | • | — | • | • | • | — |
| CDMAG11 | 13' - 15' | 4-3/8" | 7/8 oz. | Two No. 1 | • | • | • | • | • | • | • | • | • | • |
| CDMAG14 | 15' - 18' | 5-1/2" | 1-1/4 oz. | Two No. 2/0 | • | • | • | • | • | • | • | • | • | • |
| CDMAG18 | 18' - 21' | 7" | 2-3/8 oz. | Two No. 4/0 | • | • | • | • | • | • | • | • | • | • |
| CDMAG22 | 18' - 25' | 9" | 3-1/2 oz. | Two No. 7/0 | — | • | • | • | — | • | • | • | • | — |



HUSKY MAGNUM®

CONSTRUCTION
Heavy-Duty Plastic,
Through Wire Construction

FEATURES
Custom Lip Designs
Holographic Foil, Rattle

ACTION
Slow Rising
Tracks up to 12 Knots

TARGET SPECIES
Offshore
Saltwater

TERMINAL
VMC® 4X
Perma Steel® Hooks



BSRD
Blue Sardine



BTO
Bonito



D
Dorado



UV HPU
Hot Pink UV



PM
Purple Mackerel



RH
Red Head



S
Silver



SBM
Silver Blue Mackerel



UV SFU
Sailfish UV



UV WHU
Wahoo UV

SPECIFICATIONS / COLORS

| Model No. | Running Depth | Body Length | Weight | Hooks | BSRD | BTO | D | HPU | PM | RH | S | SBM | SFU | WHU |
|---------------|---------------|-------------|-----------|-------------|------|-----|---|-----|----|----|---|-----|-----|-----|
| HMAG15 | 15' | 5-1/2" | 1-1/4 oz. | Two No. 2/0 | • | • | • | • | • | • | • | • | • | • |
| HMAG25 | 25' | 6-1/4" | 2-3/8 oz. | Two No. 4/0 | • | • | • | • | • | • | • | • | • | • |





SKITTER WALK®

CONSTRUCTION
Durable Plastic, Translucent
Natural & Chrome Patterns

FEATURES
Cadence Rattle
Weighted Tail

ACTION
"Walk-the-Dog"
Topwater Action, Floating

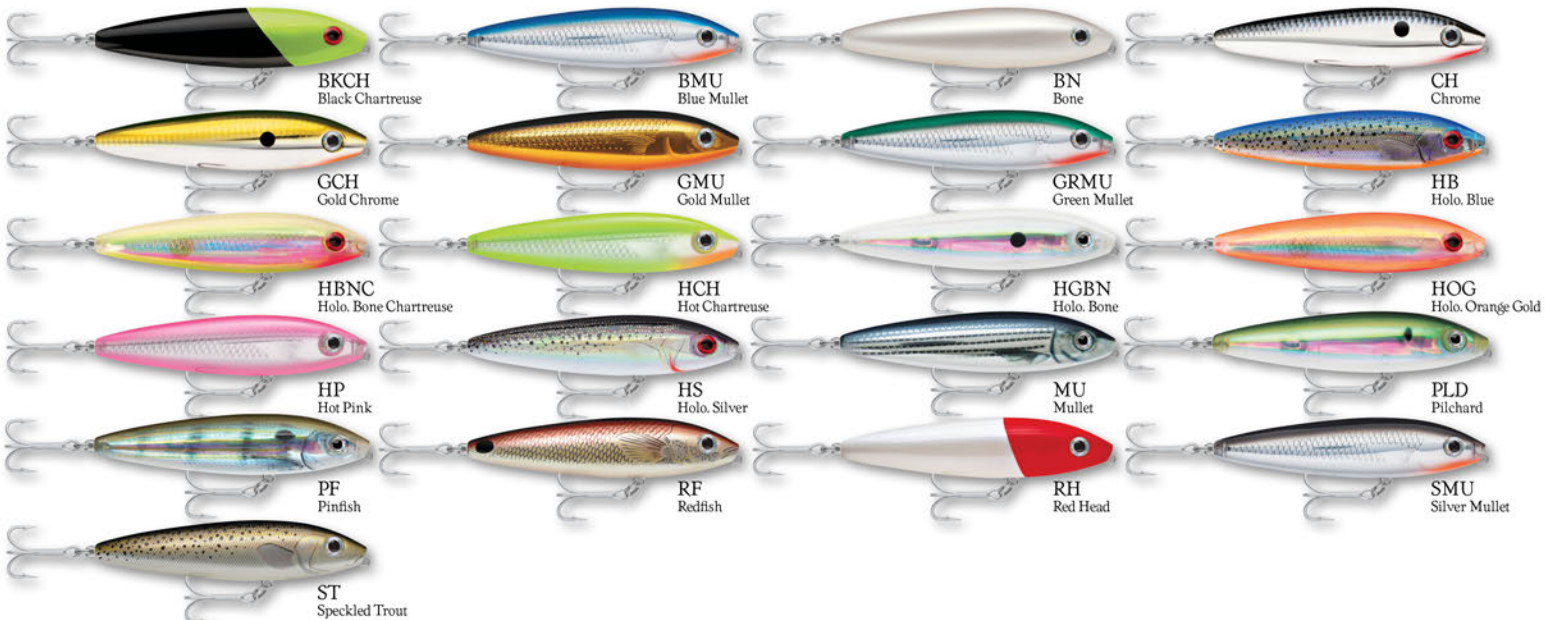
TARGET SPECIES
Bass/Multi-Species
Freshwater & Saltwater

TERMINAL
VMC® Black Nickel
or Perma Steel® Hooks



SPECIFICATIONS/COLORS

| Model No. | Running Depth | Body Length | Weight | Hooks | BB | BG | BKCH | BMU | BN | CH | F | FSD | GCH | GMU | GRMU | HB | HBNC | HCH | HGBN | HOG | HP | HS | MU | PLD | PF | RF | RH | SDT | SMU | ST |
|-------------|---------------|-------------|----------|-----------|----|----|------|-----|----|----|---|-----|-----|-----|------|----|------|-----|------|-----|----|----|----|-----|----|----|----|-----|-----|----|
| SW08 | Topwater | 3-1/8" | 7/16 oz. | Two No. 3 | • | • | • | • | • | • | • | • | • | • | • | • | • | • | • | • | • | • | • | • | • | • | • | • | • | |



SPECIFICATIONS/COLORS

| Model No. | Running Depth | Body Length | Weight | Hooks | BKCH | BMU | BN | CH | GCH | GMU | GRMU | HB | HBNC | HCH | HGBN | HOG | HP | HS | MU | PLD | PF | RF | RH | SMU | ST |
|--------------|---------------|-------------|---------|-----------|------|-----|----|----|-----|-----|------|----|------|-----|------|-----|----|----|----|-----|----|----|----|-----|----|
| SSW11 | Topwater | 4-3/8" | 5/8 oz. | Two No. 2 | • | • | • | • | • | • | • | • | • | • | • | • | • | • | • | • | • | • | • | • | |



SKITTER POP®

FRESHWATER CONSTRUCTION
Balsa Wood, VMC® Black Nickel Round Bend Hooks Flash Feather Tail

SALTWATER CONSTRUCTION
Super Tough Abachi Wood VMC® Perma Steel® Hooks

FEATURES
Surface Popper Cupped Lip

ACTION
Loud Popping Water Spitting, Floating

TARGET SPECIES
Multi-Species Freshwater & Saltwater



FRESHWATER SPECIFICATIONS/COLORS

| Model No. | Running Depth | Body Length | Weight | Hooks | F | FT | LF | S | SB | SD |
|-------------|---------------|-------------|----------|-----------|---|----|----|---|----|----|
| SP05 | Topwater | 2" | 3/16 oz. | Two No. 6 | • | • | • | • | • | • |
| SP07 | Topwater | 2-3/4" | 1/4 oz. | Two No. 5 | • | • | • | • | • | • |
| SP09 | Topwater | 3-1/2" | 1/2 oz. | Two No. 3 | • | • | • | • | • | • |



SALTWATER SPECIFICATIONS/COLORS

| Model No. | Running Depth | Body Length | Weight | Hooks | BC | FC | GM | MU | RH |
|--------------|---------------|-------------|------------|-------------|----|----|----|----|----|
| SSP12 | Topwater | 4-3/4" | 1-7/16 oz. | No. 1 & 2/0 | • | • | • | • | • |



SKITTER PROP®

CONSTRUCTION
Premium Balsa Wood Lipless Design

FEATURES
Stainless Steel Propeller

ACTION
Dives and Rolls on Snap, Retrieve Sputter and Spits, Floating

TARGET SPECIES
Multi-Species Freshwater

TERMINAL
VMC® Black Nickel Round Bend Hooks



SPECIFICATIONS/COLORS

| Model No. | Running Depth | Body Length | Weight | Hooks | CH | F | FT | LF | S | SD |
|--------------|---------------|-------------|---------|-----------|----|---|----|----|---|----|
| SPR07 | Topwater | 2-3/4" | 1/4 oz. | Two No. 4 | • | • | • | • | • | • |





Rap-V Blade 05

Rap-V Blade 06

RAP-V BLADE

CONSTRUCTION

Metal Frame
Plastic Body

FEATURES

Two Line Tie Holes
Distinctive Loud BB Rattle

ACTION

Instant Tight Vibration
on Lift or Retrieve

TARGET SPECIES

Bass/Multi-Species
Freshwater

TERMINAL

VMC® Snap, Black Nickel Round
Bend & Double Belly Hook



ACHT
Albino Chrome
Tiger



BGH
Blue Ghost



BUD
Bud



CBN
Carbon



CLN
Clown



CRT
Chrome Tiger



FT
Firetiger



G
Gold



GCHT
Gold Chrome
Tiger



GH
Ghost



MBS
Moss Back Shiner



MLC
Molten Copper



PD
Purpledescent



RDF
Redfire



S
Silver



YP
Yellow Perch

SPECIFICATIONS / COLORS

| Model No. | Running Depth | Body Length | Weight | Hooks | ACHT | BGH | BUD | CBN | CLN | CRT | FT | G | GCHT | GH | MBS | MLC | PD | RDF | S | YP | |
|--------------|---------------|-------------|---------|-----------|------|-----|-----|-----|-----|-----|----|---|------|----|-----|-----|----|-----|---|----|---|
| RVB05 | Variable | 2" | 3/8 oz. | No. 6 & 8 | • | • | • | • | • | • | • | • | • | • | • | • | • | • | • | • | • |
| RVB06 | Variable | 2-1/2" | 1/2 oz. | No. 4 & 6 | • | • | • | • | • | • | • | • | • | • | • | • | • | • | • | • | • |

US PATENT NUMBER D912,198



RATTLIN' RAPALA®

CONSTRUCTION
Classic Lipless Body
Balanced Design

FEATURES
Unique Tuned Rattle
Chamber, Long-Casting

ACTION
Legendary Rapala "Wobble" Combined
with Harmonic Rattle Sound, Sinking

TARGET SPECIES
Multi-Species
Freshwater

TERMINAL
VMC® Black Nickel
Round Bend Hooks



BB
Baby Bass



BG
Bluegill



BN
Bone



BSD
Blue Shad



CHB
Chrome Blue



FT
Firetiger



HBSD
Holo. Blue Shad



HESD
Holo. Emerald Shad



HSD
Holo. Shad



RCW
Red Crawdad



RFCW
Redfire Crawdad



S
Silver



SB
Silver Blue



SD
Shad



SG
Silver Gold



Put your logo on a legendary Rattlin' Rapala. It's proven to lure more business, hook more customers and land more big deals. Visit rapala.com for complete details.

SPECIFICATIONS / COLORS

| Model No. | Running Depth | Body Length | Weight | Hooks | BB | BG | BN | BSD | CHB | FT | HBSD | HESD | HSD | RCW | RFCW | S | SB | SD | SG |
|--------------|---------------|-------------|----------|-----------|----|----|----|-----|-----|----|------|------|-----|-----|------|---|----|----|----|
| RNR04 | Variable | 1-1/2" | 3/16 oz. | Two No. 7 | • | - | - | - | • | • | • | • | • | - | - | • | • | • | • |
| RNR05 | Variable | 2" | 3/8 oz. | Two No. 5 | • | • | • | • | • | • | • | • | • | • | • | • | • | • | • |
| RNR07 | Variable | 2-3/4" | 1/2 oz. | Two No. 4 | • | • | • | • | • | • | • | • | • | • | • | • | • | • | • |
| RNR08 | Variable | 3-1/8" | 3/4 oz. | Two No. 3 | • | - | - | - | • | • | • | • | • | - | - | • | • | • | • |



RIPPIN' RAP®

CONSTRUCTION
Lipless, Tall and Skinny
Textured Scale Body Design

FEATURES
Distinctive Loud BB Rattle
Long-Casting

ACTION
Versatile, Hard Vibrating
Crank, Swim or Rip, Sinking

TARGET SPECIES
Multi-Species
Freshwater

TERMINAL
VMC® Black Nickel
Round Bend Hooks



SPECIFICATIONS / COLORS

| Model No. | Running Depth | Body Length | Weight | Hooks | BLKL | BLS | CH | CHB | CMBS | CSD | DCW | FRB | FT | GCH | GTU | HSD | JLC | LPC | MFT | OGCW | PCL | PCS | PRCL | PTU | RCW | RFCW | RTR | VDH | YP |
|--|---------------|-------------|----------|------------|------|-----|----|-----|------|-----|-----|-----|----|-----|-----|-----|-----|-----|-----|------|-----|-----|------|-----|-----|------|-----|-----|----|
| Ultra Light Ripplin' Rap Sizes 03 & 04 available - (see page 73) | | | | | | | | | | | | | | | | | | | | | | | | | | | | | |
| RPR05 | Variable | 2" | 5/16 oz. | No. 8 & 10 | • | • | • | • | • | • | • | • | • | • | • | • | • | • | • | • | • | • | • | • | • | • | • | • | • |
| RPR06 | Variable | 2-1/2" | 1/2 oz. | No. 6 & 8 | • | • | • | • | • | • | • | • | • | • | • | • | • | • | • | • | • | • | • | • | • | • | • | • | • |
| RPR07 | Variable | 2-3/4" | 7/8 oz. | No. 4 & 6 | • | • | • | • | • | • | • | • | • | • | • | • | • | • | • | • | • | • | • | • | • | • | • | • | • |



SHAD DANCER®

CONSTRUCTION
Premium Balsa Wood
Deep Diving Lip Design

FEATURES
Deep Diving
Silent/Non-Rattling

ACTION
Aggressive Sweeping Tail
Cast or Trolled, Floating on Pause

TARGET SPECIES
Walleye/Multi-Species
Freshwater

TERMINAL
VMC® Black Nickel
Round Bend Hooks



BFL
Blue Flash



DCW
Dark Brown
Crawdad



HS
Hot Steel



P
Perch



PRC
Purple Chrome



RCW
Red Crawdad



S
Silver



SFC
Silver Fluorescent
Chartreuse



BGL
Live Bluegill



FT
Firetiger



HSD
Helsinki Shad



PC
Pink Chrome



PSL
Live Pumpkinseed



RFCW
Redfire Crawdad



SBL
Live Smallmouth
Bass



SFL
Silver Flash



CGRF
Chrome Gold
Fluorescent Red



GTU
Green Tiger UV



LBL
Live Largemouth
Bass



PD
Purpledescent



PTU
Pink Tiger UV



RSL
Live River Shad



SD
Shad



YP
Yellow Perch

SPECIFICATIONS/COLORS

| Model No. | Running Depth | Body Length | Weight | Hooks | BFL | BGL | CGRF | DCW | FT | GTU | HS | HSD | LBL | P | PC | PD | PRC | PSL | PTU | RCW | RFCW | RSL | S | SBL | SD | SFC | SFL | YP |
|--------------|---------------|-------------|----------|-----------|-----|-----|------|-----|----|-----|----|-----|-----|---|----|----|-----|-----|-----|-----|------|-----|---|-----|----|-----|-----|----|
| SDD04 | 7' - 10' | 1-1/2" | 3/16 oz. | Two No. 8 | • | • | • | • | • | • | • | • | • | • | • | • | • | • | • | • | • | • | • | • | • | • | • | • |
| SDD05 | 7' - 10' | 2" | 1/4 oz. | Two No. 6 | • | • | • | • | • | • | • | • | • | • | • | • | • | • | • | • | • | • | • | • | • | • | • | • |
| SDD07 | 9' - 14' | 2-3/4" | 9/16 oz. | Two No. 5 | • | • | • | • | • | • | • | • | • | • | • | • | • | • | • | • | • | • | • | • | • | • | • | • |

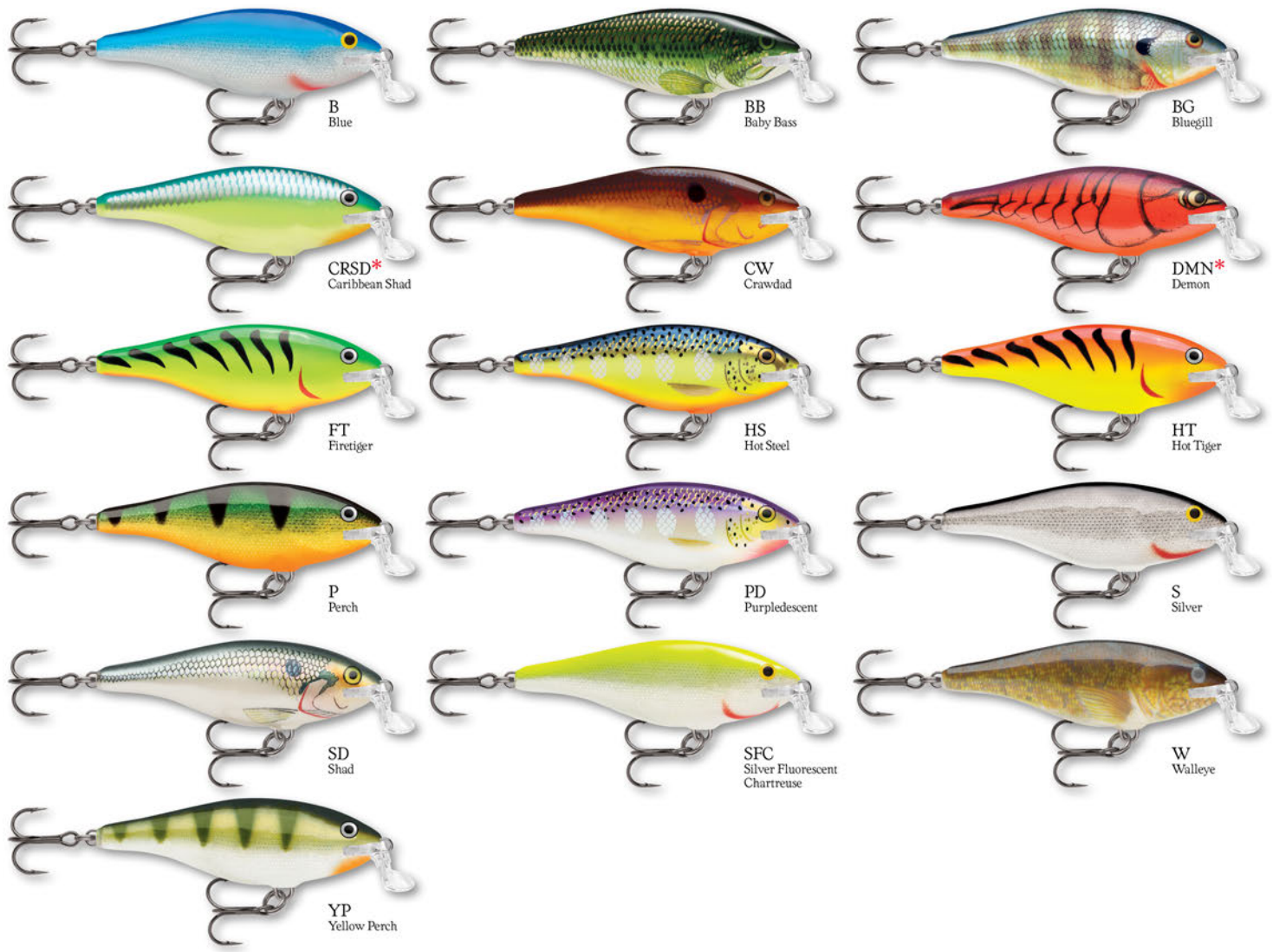






SHALLOW SHAD RAP®

CONSTRUCTION : Balsa Wood, Through Wire Shallow Running Lip
FEATURES : Natural Baitfish Profile, Floating on Pause
ACTION : Classic Rapala "Wounded-Minnow" Slow Retrieve
TARGET SPECIES : Multi-Species Freshwater
TERMINAL : VMC® Black Nickel Round Bend Hooks



SPECIFICATIONS/COLORS

| Model No. | Running Depth | Body Length | Weight | Hooks | B | BB | BG | CRSD | CW | DMN | FT | HS | HT | P | PD | S | SD | SFC | W | YP | |
|--------------|---------------|-------------|----------|-----------|---|----|----|------|----|-----|----|----|----|---|----|---|----|-----|---|----|---|
| SSR05 | 3' - 6' | 2" | 3/16 oz. | Two No. 8 | • | • | • | • | • | • | • | • | • | • | • | • | • | • | • | • | • |
| SSR07 | 4' - 6' | 2-3/4" | 1/4 oz. | Two No. 6 | • | • | • | • | • | • | • | • | • | • | • | • | • | • | • | • | • |
| SSR09 | 6' - 8' | 3-1/2" | 3/8 oz. | Two No. 3 | • | • | • | • | • | • | • | • | • | • | • | • | • | • | • | • | • |

* **IKE'S CUSTOM INK COLOR** Color pattern designed by Mike Iaconelli exclusively for Rapala

NEW

Six New Colors



GLASS SHAD RAP®

CONSTRUCTION : Translucent Plastic Body
Inner Holographic Foil

FEATURES : Rattling, Suspending
Long-Casting

ACTION : Harder Wobble Action
Than a Shad Rap

TARGET SPECIES : Multi-Species
Freshwater

TERMINAL : VMC® Black Nickel
Round Bend Hooks



BGH
Blue Ghost



NEW BWBG
Glass Black Wonderbread



NEW FPNG
Glass Fruit Punch



GBCW
Glass Brown Crawdad



GBK
Glass Black



GBSD
Glass Blue Shad



GCS
Glass Chartreuse Shad



GP
Glass Perch



GPS
Glass Purple Shad



GPSF
Glass Purple Sunfire



GSD
Glass Shad



GYP
Glass Yellow Perch



HGH
Helsinki Ghost



NEW JLCG
Glass Juicy Lucy



OGH
Olive Ghost



NEW PSQG
Glass Pink Squirrel



NEW SLMG
Glass Slimy Lime



NEW VDHG
Glass Voodoo Haze

SPECIFICATIONS/NEW COLORS

| Model No. | Running Depth | Body Length | Weight | Hooks | BGH | BWBG | FPNG | GBCW | GBK | GBSD | GCS | GP | GPS | GPSF | GSD | GYP | HGH | JLCG | OGH | PSQG | SLMG | VDHG | |
|--------------|---------------|-------------|----------|-----------|-----|------|------|------|-----|------|-----|----|-----|------|-----|-----|-----|------|-----|------|------|------|---|
| GSR04 | 5' - 11" | 1-1/2" | 3/16 oz. | Two No. 8 | • | • | • | • | • | • | • | • | • | • | • | • | • | • | • | • | • | • | • |
| GSR05 | 7' - 11" | 2" | 5/16 oz. | Two No. 6 | • | • | • | • | • | • | • | • | • | • | • | • | • | • | • | • | • | • | • |
| GSR07 | 7' - 15' | 2-3/4" | 7/16 oz. | Two No. 4 | • | • | • | • | • | • | • | • | • | • | • | • | • | • | • | • | • | • | • |



JOINTED SHAD RAP®

CONSTRUCTION
2-Piece Articulated Plastic Body
Deep-Diving Lip

FEATURES
Rattling
Suspending

ACTION
Classic Rapala "Wounded-
Minnow" Versatile Retrieve

TARGET SPECIES
Multi-Species
Freshwater

TERMINAL
VMC® Black Nickel
Round Bend Hooks



SPECIFICATIONS/COLORS

| Model No. | Running Depth | Body Length | Weight | Hooks | BB | BBSD | BCF | BCSD | BCW | BHO | BOF | BOSD | BSD | CB | CLN | CW | FCW | FT | GTU | HT | P | PDS | PRT | PTU | RCW | RFCW | SD | SSD | W | YP |
|--------------|---------------|-------------|----------|------------|----|------|-----|------|-----|-----|-----|------|-----|----|-----|----|-----|----|-----|----|---|-----|-----|-----|-----|------|----|-----|---|----|
| JSR04 | 4' - 6' | 1-1/2" | 3/16 oz. | No. 8 & 10 | • | • | • | • | • | • | • | • | • | • | • | • | • | • | • | • | • | • | • | • | • | • | • | • | • | • |
| JSR05 | 6' - 13' | 2" | 1/4 oz. | Two No. 6 | • | • | • | • | • | • | • | • | • | • | • | • | • | • | • | • | • | • | • | • | • | • | • | • | • | • |
| JSR07 | 7' - 15' | 2-3/4" | 7/16 oz. | Two No. 4 | • | • | • | • | • | • | • | • | • | • | • | • | • | • | • | • | • | • | • | • | • | • | • | • | • | • |



JOINTED SHALLOW SHAD RAP®

| | | | | |
|---|------------------------|---|-----------------------------|---------------------------------------|
| CONSTRUCTION | FEATURES | ACTION | TARGET SPECIES | TERMINAL |
| 2-Piece Articulated Plastic Body Shallow Running Lip | Rattling Suspending | Wide Kicking Tail Action Slow or Fast Retrieve | Multi-Species Freshwater | VMC® Black Nickel Round Bend Hooks |



BB
Baby Bass



BSD
Blue Shad



CLN
Clown



CW
Crawdad



FT
Firetiger



HT
Hot Tiger



P
Perch



PDS
Purplescent



RCW
Red Crawdad



SD
Shad



SSD
Silver Shad



YP
Yellow Perch

SPECIFICATIONS/COLORS

| Model No. | Running Depth | Body Length | Weight | Hooks | BB | BSD | CLN | CW | FT | HT | P | PDS | RCW | SD | SSD | YP |
|---------------|---------------|-------------|---------|-----------|----|-----|-----|----|----|----|---|-----|-----|----|-----|----|
| JSSR05 | 2' - 4' | 2" | 1/4 oz. | Two No. 6 | • | • | • | • | • | • | • | • | • | • | • | • |
| JSSR07 | 3' - 5' | 2-3/4" | 3/8 oz. | Two No. 4 | • | • | • | • | • | • | • | • | • | • | • | • |



SHAD RAP® RS

| | | | | |
|---|--------------------------------------|---------------------------------------|-----------------------------|---------------------------------------|
| CONSTRUCTION | FEATURES | ACTION | TARGET SPECIES | TERMINAL |
| Durable Plastic Body Deep-Diving Lip | Rattling, Suspending Long-Casting | Harder Wobble Action Than Shad Rap | Multi-Species Freshwater | VMC® Black Nickel Round Bend Hooks |



SPECIFICATIONS/COLORS

| Model No. | Running Depth | Body Length | Weight | Hooks | CLN | CW | FT | HT | P | PCL | PRCL | S | SB | SD |
|---------------|---------------|-------------|----------|-----------|-----|----|----|----|---|-----|------|---|----|----|
| SRRS04 | 5' - 11' | 1-1/2" | 3/16 oz. | Two No. 8 | • | • | • | • | • | • | • | • | • | • |
| SRRS05 | 7' - 11' | 2" | 5/16 oz. | Two No. 6 | • | • | • | • | • | • | • | • | • | • |
| SRRS07 | 7' - 15' | 2-3/4" | 7/16 oz. | Two No. 4 | • | • | • | • | • | • | • | • | • | • |



SUPER SHAD RAP®

CONSTRUCTION
Premium Balsa Wood
Shallow Running Lip

FEATURES
Large Natural Profile
Floating on Pause

ACTION
Wide Rolling
Natural Swimming Action

TARGET SPECIES
Large Predator
Freshwater & Saltwater

TERMINAL
3X VMC® Black Nickel
Round Bend Hooks



BG
Bluegill



BGL
Live Bluegill



CH
Chrome



FT
Firetiger



GF
Goldfish



GSH
Gold Shiner



HLW
Halloween



HT
Hot Tiger



LBL
Live Largemouth
Bass



MU
Mullet



OPSD
Original Pearl Shad



P
Perch



RH
Redhead



RSL
Live River Shad



SBL
Live Smallmouth
Bass



SCRB
Scaled Baitfish



SD
Shad



SH
Silver Shiner



W
Walleye



YP
Yellow Perch

SPECIFICATIONS/COLORS

| Model No. | Running Depth | Body Length | Weight | Hooks | BG | BGL | CH | FT | GF | GSH | HLW | HT | LBL | MU | OPSD | P | RH | RSL | SBL | SCRB | SD | SH | W | YP |
|-----------|---------------|-------------|-----------|-------------|----|-----|----|----|----|-----|-----|----|-----|----|------|---|----|-----|-----|------|----|----|---|----|
| SSR14 | 5' - 9' | 5-1/2" | 1-5/8 oz. | Two No. 3/0 | • | • | • | • | • | • | • | • | • | • | • | • | • | • | • | • | • | • | • | • |



ORIGINAL FLOATING®

CONSTRUCTION Premium Balsa Wood Through Wire Construction

FEATURES Natural Minnow Profile Floating, Versatile Retrieve

ACTION Classic Rapala "Wounded-Minnow"

TARGET SPECIES Multi-Species Freshwater

TERMINAL VMC® Black Nickel Round Bend Hooks



SPECIFICATIONS / COLORS

| Model No. | Running Depth | Body Length | Weight | Hooks | B | BHO | BOSD | BP | BTR | CLN | FT | G | GFR | HS | P | PD | PK | PKL | RT | RTL | S | SFC | SH | SML | TR | V | WAL | YP |
|------------|---------------|-------------|-----------|-------------|---|-----|------|----|-----|-----|----|---|-----|----|---|----|----|-----|----|-----|---|-----|----|-----|----|---|-----|----|
| F03 | 2' - 4' | 1-1/2" | 1/16 oz. | Two No. 12 | • | • | • | • | • | • | • | • | • | • | • | • | • | • | • | • | • | • | • | • | • | • | • | • |
| F05 | 3' - 5' | 2" | 1/16 oz. | Two No. 10 | • | • | • | • | • | • | • | • | • | • | • | • | • | • | • | • | • | • | • | • | • | • | • | • |
| F07 | 3' - 5' | 2-3/4" | 1/8 oz. | Two No. 8 | • | • | • | • | • | • | • | • | • | • | • | • | • | • | • | • | • | • | • | • | • | • | • | • |
| F09 | 3' - 5' | 3-1/2" | 3/16 oz. | Two No. 8 | • | • | • | • | • | • | • | • | • | • | • | • | • | • | • | • | • | • | • | • | • | • | • | • |
| F11 | 4' - 6' | 4-3/8" | 3/16 oz. | Three No. 6 | • | • | • | • | • | • | • | • | • | • | • | • | • | • | • | • | • | • | • | • | • | • | • | • |
| F13 | 4' - 6' | 5-1/4" | 1/4 oz. | Three No. 6 | • | • | • | • | • | • | • | • | • | • | • | • | • | • | • | • | • | • | • | • | • | • | • | • |
| F18 | 6' - 11' | 7" | 11/16 oz. | Three No. 2 | • | • | • | • | • | • | • | • | • | • | • | • | • | • | • | • | • | • | • | • | • | • | • | • |



JOINTED™

CONSTRUCTION
2-Piece Articulated Balsa or Abachi Wood
Through Wire Construction

FEATURES
Broken Back Minnow
Profile, Floating

ACTION
Lively "Wounded-
Minnow" Slow Retrieve

TARGET SPECIES
Multi-Species
Freshwater

TERMINAL
VMC® Black Nickel
Round Bend Hooks



SPECIAL J05 COLOR PATTERNS



SPECIFICATIONS/COLORS

| Model No. | Running Depth | Body Length | Weight | Hooks | B | BTR | FT | G | GFR | P | PK | RT | S | SFC | TR | YP |
|------------|---------------|-------------|----------|-----------|---|-----|----|---|-----|---|----|----|---|-----|----|----|
| J05 | 3' - 5' | 2" | 1/8 oz. | Two No.10 | • | • | • | • | • | • | — | • | • | • | • | • |
| J07 | 4' - 6' | 2-3/4" | 1/8 oz. | Two No. 8 | • | • | • | • | • | • | — | • | • | • | • | • |
| J09 | 5' - 7' | 3-1/2" | 1/4 oz. | Two No. 6 | • | • | • | • | • | • | • | • | • | • | • | • |
| J11 | 4' - 8' | 4-3/8" | 5/16 oz. | Two No. 4 | • | • | • | • | • | • | • | • | • | • | • | • |
| J13 | 4' - 14' | 5-1/4" | 5/8 oz. | Two No. 2 | • | • | • | • | • | • | • | • | • | • | • | • |



FLAT RAP®

CONSTRUCTION
Premium Balsa Wood
Through Wire Construction

FEATURES
Flat-Sided, Triangle Lip
Slow-Rising

ACTION
Hard Flashing Rapala
"Wounded-Minnow"

TARGET SPECIES
Multi-Species
Freshwater

TERMINAL
VMC® Black Nickel
Round Bend Hooks



SPECIFICATIONS / COLORS

| Model No. | Running Depth | Body Length | Weight | Hooks | CH | CLN | P | RT | S | SB | TR | YP |
|--------------|---------------|-------------|---------|-----------|----|-----|---|----|---|----|----|----|
| FLR08 | 2' - 4' | 3-1/8" | 1/4 oz. | Two No. 6 | • | • | • | • | • | • | • | • |



COUNTDOWN®

CONSTRUCTION Premium Balsa Wood Through Wire Construction | **FEATURES** Consistent Depth Control Sinks 1-Foot Per Second | **ACTION** Weighted Lure Creates Slow Rolling Action | **TARGET SPECIES** Multi-Species Freshwater | **TERMINAL** VMC® Black Nickel Round Bend Hooks



SPECIFICATIONS/COLORS

| Model No. | Running Depth | Body Length | Weight | Hooks | B | BTR | FMN | FT | G | HMMD | OGMD | P | RT | S | TR | YP |
|-----------|---------------|-------------|----------|------------|---|-----|-----|----|---|------|------|---|----|---|----|----|
| CD01 | 1' - 3' | 1" | 1/16 oz. | One No. 12 | - | • | • | - | - | • | • | - | - | • | • | - |
| CD03 | 2' - 3' | 1-1/2" | 1/8 oz. | Two No. 12 | • | • | • | • | • | • | • | • | • | • | • | • |
| CD05 | 3' - 6' | 2" | 3/16 oz. | Two No. 10 | • | • | • | • | • | • | • | • | • | • | • | • |
| CD07 | 5' - 8' | 2-3/4" | 1/4 oz. | Two No. 6 | • | • | • | • | • | • | • | • | • | • | • | • |
| CD09 | 7' - 10' | 3-1/2" | 7/16 oz. | Two No. 5 | • | • | • | • | • | • | • | • | • | • | • | • |
| CD11 | 9' - 13' | 4-3/8" | 9/16 oz. | Two No. 4 | • | • | • | • | • | • | - | • | • | • | • | • |

FAT RAP®

CONSTRUCTION Premium Balsa Wood Deep Diving Lip | **FEATURES** Wide Profile Long-Casting | **ACTION** Tight Swimming Floating on Pause | **TARGET SPECIES** Multi-Species Freshwater | **TERMINAL** VMC® Black Nickel Round Bend Hooks



SPECIFICATIONS/COLORS

| Model No. | Running Depth | Body Length | Weight | Hooks | CW | FT | P | S |
|-----------|---------------|-------------|----------|-----------|----|----|---|---|
| FR05 | 7' - 14' | 2" | 5/16 oz. | Two No. 5 | • | • | • | • |





COUNTDOWN® ELITE

The Countdown® Elite harnesses over 80 years of lure making craftsmanship into a premium balsa lure, featuring the legendary controlled slow-sinking method of the original Countdown®. Lead Free Tungsten Polymer weighting maximizes casting distance and accuracy. Forged, flattened, one piece through wire construction improves durability. Premium high-def patterns with metallic gilded face, bringing the look to a totally new level.

CONSTRUCTION
Premium Balsa Wood
Through Wire Construction

FEATURES
Controlled Depth
Sinking Rate

ACTION
Flutter on the Drop
Slow Rolling Action

TARGET SPECIES
Multi-Species
Freshwater

TERMINAL
VMC® Inline Hybrid Treble 2X Hooks
Heavy-Duty Split Rings



SPECIFICATIONS / COLORS

| Model No. | Running Depth | Body Length | Weight | Hooks | GDBT | GDCL | GDGO | GDFT | GDGS | GDHT | GDIW | GDMN | GDRT | GDSS | GDVR | GDWK |
|--------------|---------------|-------------|----------|-----------|------|------|------|------|------|------|------|------|------|------|------|------|
| CDE55 | 3'-4' | 2- 1/4" | 3/16 oz. | Two No.12 | • | • | • | • | • | • | • | • | • | • | • | • |
| CDE75 | 4' | 3" | 3/8 oz. | Two No.10 | • | • | • | • | • | • | • | • | • | • | • | • |

NEW

Five New Colors



HUSKY JERK®

CONSTRUCTION Durable Plastic Shallow Running Lip
FEATURES Loud Rattles Long-Casting
ACTION Suspending, Cast or Trolled Runs True at Any Speed
TARGET SPECIES Multi-Species Freshwater
TERMINAL VMC® Black Nickel Round Bend Hooks



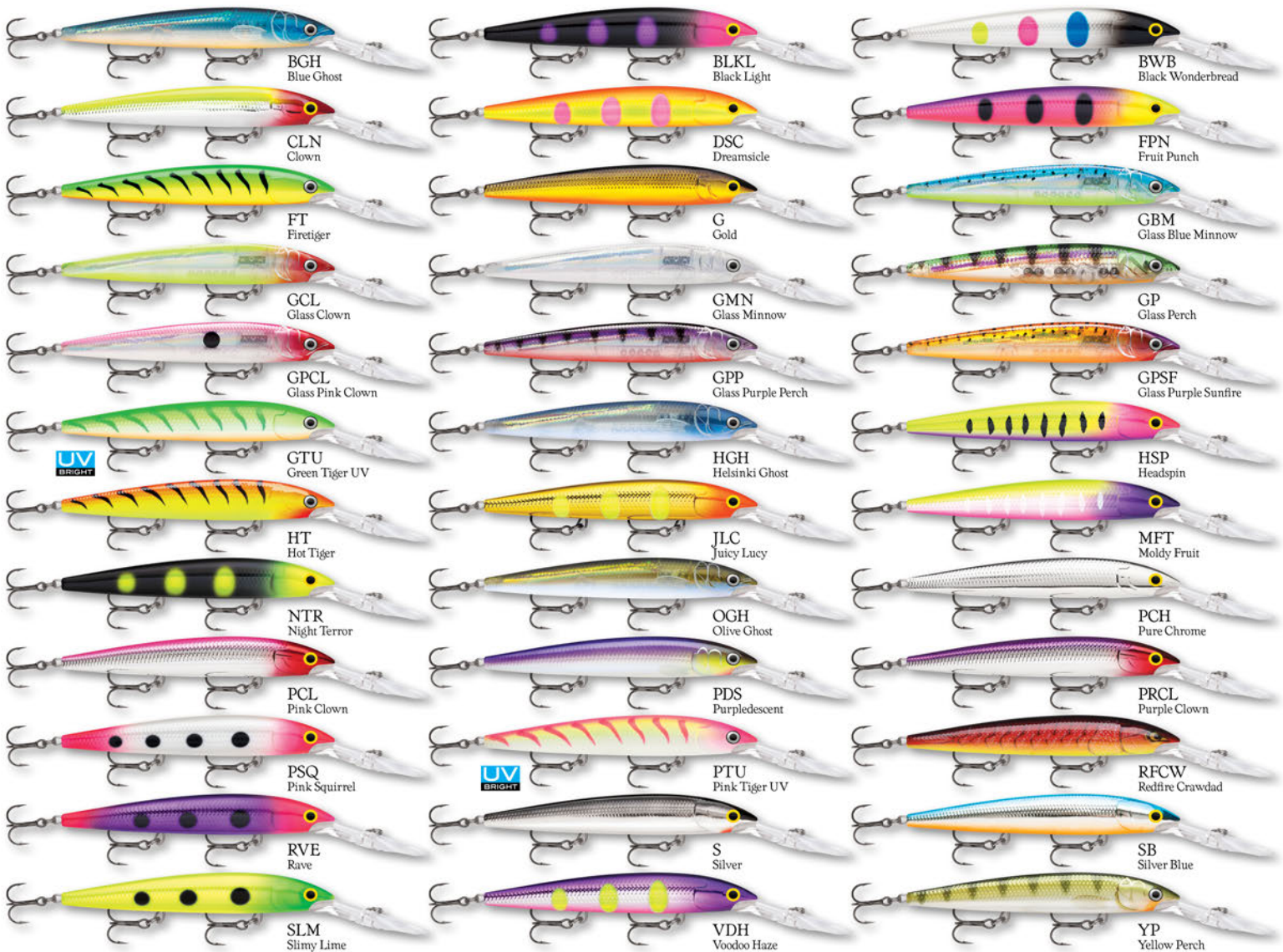
SPECIFICATIONS/NEW COLORS

| Model No. | Running Depth | Body Length | Weight | Hooks | BB | BGH | BWB | CLN | FT | G | GBM | GCL | GMN | GP | GPCL | GPSF | GTU | HGH | HSD | HSP | JLC | MFT | OGH | PCH | PCL | PRCL | PTU | RFCW | S | SB | TSD | VDH | YP | |
|-----------|---------------|-------------|----------|-------------|----|-----|-----|-----|----|---|-----|-----|-----|----|------|------|-----|-----|-----|-----|-----|-----|-----|-----|-----|------|-----|------|---|----|-----|-----|----|---|
| HJ06 | 4' - 6' | 2-1/2" | 1/8 oz. | Two No. 10 | • | • | • | • | • | • | • | • | • | • | • | • | • | • | • | • | • | • | • | • | • | • | • | • | • | • | • | • | • | |
| HJ08 | 4' - 6' | 3-1/8" | 1/4 oz. | Two No. 6 | • | • | • | • | • | • | • | • | • | • | • | • | • | • | • | • | • | • | • | • | • | • | • | • | • | • | • | • | • | |
| HJ10 | 4' - 8' | 4" | 3/8 oz. | Two No. 6 | • | • | • | • | • | • | • | • | • | • | • | • | • | • | • | • | • | • | • | • | • | • | • | • | • | • | • | • | • | |
| HJ12 | 4' - 8' | 4-3/4" | 7/16 oz. | Three No. 6 | • | • | • | • | • | • | • | • | • | • | • | • | • | • | • | • | • | • | • | • | • | • | • | • | • | • | • | • | • | • |
| HJ14 | 4' - 8' | 5-1/2" | 5/8 oz. | Three No. 4 | • | • | • | • | • | • | • | • | • | • | • | • | • | • | • | • | • | • | • | • | • | • | • | • | • | • | • | • | • | • |



DOWN DEEP HUSKY JERK®

CONSTRUCTION : Durable Plastic Deep Diving Lip
FEATURES : Loud Rattles Long-Casting
ACTION : Suspending, Cast or Trolled Runs True at Any Speed
TARGET SPECIES : Multi-Species Freshwater
TERMINAL : VMC® Black Nickel Round Bend Hooks



SPECIFICATIONS / COLORS

| Model No. | Running Depth | Body Length | Weight | Hooks | BGH | BLKL | BWB | CLN | DSC | FPN | FT | G | GBM | GCL | GMN | GP | GPCL | GPP | GPSF | GTU | HGH | HSP | HT | JLC | MFT | NTR | OGH | PCH | PCL | PDS | PRCL | PSQ | PTU | RFCW | RVE | S | SB | SLM | VDH | YP | | | | |
|-----------|---------------|-------------|-----------|-------------|-----|------|-----|-----|-----|-----|----|---|-----|-----|-----|----|------|-----|------|-----|-----|-----|----|-----|-----|-----|-----|-----|-----|-----|------|-----|-----|------|-----|---|----|-----|-----|----|---|---|---|---|
| DHJ10 | 7' - 16' | 4" | 3/8 oz. | Two No. 6 | • | • | • | • | • | • | • | • | • | • | • | • | • | • | • | • | • | • | • | • | • | • | • | • | • | • | • | • | • | • | • | • | • | • | • | • | • | • | | |
| DHJ12 | 8' - 19' | 4-3/4" | 1/2 oz. | Three No. 5 | • | • | • | • | • | • | • | • | • | • | • | • | • | • | • | • | • | • | • | • | • | • | • | • | • | • | • | • | • | • | • | • | • | • | • | • | • | • | • | |
| DHJ14 | 10' - 20' | 5-1/2" | 13/16 oz. | Three No. 4 | • | • | • | • | • | • | • | • | • | • | • | • | • | • | • | • | • | • | • | • | • | • | • | • | • | • | • | • | • | • | • | • | • | • | • | • | • | • | • | • |



JOINTED DEEP HUSKY JERK®

CONSTRUCTION
2-Piece Articulated Plastic Body
Deep Diving Lip

FEATURES
Loud Rattles
Kicking Tail

ACTION
High-Action Suspending During Pause
Runs True at Any Speed

TARGET SPECIES
Multi-Species
Freshwater

TERMINAL
VMC® Black Nickel
Round Bend Hooks



BSD
Blue Shad



CLN
Clown



FT
Firetiger



GMN
Glass Minnow



UV
BRIGHT GTU
Green Tiger UV



HT
Hot Tiger



P
Perch



PCH
Pure Chrome



PDS
Purplescent



UV
BRIGHT PTU
Pink Tiger UV



RFCW
Redfire Crawdad



SSD
Silver Shad



YP
Yellow Perch

SPECIFICATIONS / COLORS

| Model No. | Running Depth | Body Length | Weight | Hooks | BSD | CLN | FT | GMN | GTU | HT | P | PCH | PDS | PTU | RFCW | SSD | YP |
|---------------|---------------|-------------|----------|-----------|-----|-----|----|-----|-----|----|---|-----|-----|-----|------|-----|----|
| JDHJ08 | 4' - 8' | 3-1/8" | 3/16 oz. | Two No. 8 | • | • | • | • | • | • | • | • | • | • | • | • | • |
| JDHJ12 | 8' - 13' | 4-3/4" | 1/2 oz. | Two No. 4 | • | • | • | • | • | • | • | • | • | • | • | • | • |

NEW

Six New Colors



DEEP TAIL DANCER®

CONSTRUCTION Premium Balsa Wood Large Deep Diving Lip
FEATURES Tapered Tail Rattle
ACTION Wide Swinging, Enhanced Swimming Floating on Pause
TARGET SPECIES Multi-Species Freshwater
TERMINAL VMC® Black Nickel Round Bend Hooks



SPECIFICATIONS/ NEW COLORS

| Model No. | Running Depth | Body Length | Weight | Hooks | BFL | BHO | BLKL | BLT | BP | BWB | CLF | FLP | FYP | GPSQ | GTU | JLC | OTU | PCLF | PD | PTU | RDT | RTF | SFL | SLM | VDH |
|--------------|---------------|-------------|----------|-----------|-----|-----|------|-----|----|-----|-----|-----|-----|------|-----|-----|-----|------|----|-----|-----|-----|-----|-----|-----|
| TDD07 | 15' | 2-3/4" | 5/16 oz. | Two No. 5 | • | • | • | • | • | • | • | • | • | • | • | • | • | • | • | • | • | • | • | • | • |
| TDD09 | 20' | 3-1/2" | 7/16 oz. | Two No. 4 | • | • | • | • | • | • | • | • | • | • | • | • | • | • | • | • | • | • | • | • | • |
| TDD11 | 30' | 4-3/8" | 3/4 oz. | Two No. 3 | • | • | • | • | • | • | • | • | • | • | • | • | • | • | • | • | • | • | • | • | • |

⚠ WARNING: Cancer and Reproductive Harm www.P65Warnings.ca.gov (All items on this page pertain to this warning)



SCATTER RAP® CRANK

| | | | | |
|---------------------------|-------------------------------------|------------------------------------|-------------------------------|------------------------------------|
| CONSTRUCTION | FEATURES | ACTION | TARGET SPECIES | TERMINAL |
| Premium Balsa Scatter Lip | Silent/Non-Rattling Tight Vibration | Floating, Erratic Evasive Sweeping | Bass/Multi-Species Freshwater | VMC® Black Nickel Round Bend Hooks |



SPECIFICATIONS / COLORS

| Model No. | Running Depth | Body Length | Weight | Hooks | BB | BBH | BG | CRSD | DCW | DMN | FT | HM | HSD | OLSL | PNGN | PSL | SMSH |
|-----------|---------------|-------------|----------|-----------|----|-----|----|------|-----|-----|----|----|-----|------|------|-----|------|
| SCRC05 | 6' - 8' | 2" | 5/16 oz. | Two No. 5 | • | • | • | • | • | • | • | • | • | • | • | • | • |

* **IKE'S CUSTOM INK COLOR** Color pattern designed by Mike Iaconelli exclusively for Rapala

US PATENT NUMBER D713926



SCATTER RAP® GLASS SHAD

| | | | | |
|---|---|---|--|--|
| CONSTRUCTION Durable Transparent Plastic Scatter Lip | FEATURES Rattle Long-Casting | ACTION Suspending, Evasive Sweeping Erratic, Hard Wobble | TARGET SPECIES Multi-Species Freshwater | TERMINAL VMC® Black Nickel Round Bend Hooks |
|---|---|---|--|--|



BGH
Blue Ghost



GBK
Glass Black



GBSD
Glass Blue Shad



GCS
Glass Chartreuse Shad



GGTU
Glass Green Tiger UV



GP
Glass Perch



GPCL
Glass Pink Clown



GPKTU
Glass Pink Tiger UV



GPRCL
Glass Purple Clown



GPS
Glass Purple Shad



GSD
Glass Shad



GYP
Glass Yellow Perch



OGH
Olive Ghost

SPECIFICATIONS/COLORS

| Model No. | Running Depth | Body Length | Weight | Hooks | BGH | GBK | GBSD | GCS | GGTU | GP | GPCL | GPKTU | GPRCL | GPS | GSD | GYP | OGH |
|----------------|---------------|-------------|----------|-----------|-----|-----|------|-----|------|----|------|-------|-------|-----|-----|-----|-----|
| SCRGS07 | 10' - 14' | 2-3/4" | 7/16 oz. | Two No. 4 | • | • | • | • | • | • | • | • | • | • | • | • | • |



SCATTER RAP® SHAD

| | | | | |
|--|--|---|--|--|
| CONSTRUCTION Premium Balsa, Scatter Lip Wire Through Construction | FEATURES Silent/Non-Rattling Long-Casting | ACTION Floating, Evasive Sweeping Erratic, Hard Wobble | TARGET SPECIES Multi-Species Freshwater | TERMINAL VMC® Black Nickel Round Bend Hooks |
|--|--|---|--|--|



SPECIFICATIONS / COLORS

| Model No. | Running Depth | Body Length | Weight | Hooks | ALB | BBH | BG | CRSD | DCW | DMN | FT | GALB | HS | HSD | P | PD | S | SD | YP |
|---------------|---------------|-------------|---------|-----------|-----|-----|----|------|-----|-----|----|------|----|-----|---|----|---|----|----|
| SCRS07 | 5' - 8' | 2-3/4" | 1/4 oz. | Two No. 5 | • | • | • | • | • | • | • | • | • | • | • | • | • | • | • |

* **IKE'S CUSTOM INK COLOR** Color pattern designed by Mike Iaconelli exclusively for Rapala



SCATTER RAP® COUNTDOWN®

| | | | | |
|--|---|--|--|--|
| CONSTRUCTION Premium Balsa, Scatter Lip Wire Through Construction | FEATURES Consistent Depth Controlled Sinking Silent/Non-Rattling | ACTION Erratic Evasive Sweeping | TARGET SPECIES Multi-Species Freshwater | TERMINAL VMC® Black Nickel Round Bend Hooks |
|--|---|--|--|--|



SPECIFICATIONS / COLORS

| Model No. | Running Depth | Body Length | Weight | Hooks | ALB | BTR | FT | G | GALB | HMMD | HS | P | PD | RT | S | TR | YP |
|-----------|---------------|-------------|---------|-----------|-----|-----|----|---|------|------|----|---|----|----|---|----|----|
| SCRCD07 | 6' - 9' | 2-3/4" | 1/4 oz. | Two No. 6 | • | • | • | • | • | • | • | • | • | • | • | • | • |

US PATENT NUMBER D692522



SCATTER RAP® MINNOW

CONSTRUCTION Premium Balsa, Scatter Lip Wire Through Construction

FEATURES Silent/ Non-Rattling

ACTION Floating, Erratic Evasive Sweeping

TARGET SPECIES Multi-Species Freshwater

TERMINAL VMC® Black Nickel Round Bend Hooks



ALB
Bleak



AYU
Ayu



B
Blue



CLN
Clown



FT
Firetiger



G
Gold



GALB
Golden Alburnus



GFR
Gold Fluorescent Red



HS
Hot Steel



P
Perch



PD
Purpledescent



PKL
Live Pike



RT
Rainbow Trout



RTL
Live Rainbow Trout



S
Silver



SFC
Silver Fluorescent Chartreuse



SML
Live Smelt



TR
Brown Trout



WAL
Live Walleye



YP
Yellow Perch

SPECIFICATIONS / COLORS

| Model No. | Running Depth | Body Length | Weight | Hooks | ALB | AYU | B | CLN | FT | G | GALB | GFR | HS | P | PD | PKL | RT | RTL | S | SFC | SML | TR | WAL | YP |
|-----------|---------------|-------------|----------|-------------|-----|-----|---|-----|----|---|------|-----|----|---|----|-----|----|-----|---|-----|-----|----|-----|----|
| SCRMII | 6' - 9' | 4-3/8" | 3/16 oz. | Three No. 6 | • | • | • | • | • | • | • | • | • | • | • | • | • | • | • | • | • | • | • | • |

US PATENT NUMBER D692521



SCATTER RAP® JOINTED™

CONSTRUCTION
Premium Balsa, Scatter Lip
Wire Through Construction

FEATURES
2-Piece Articulated Body
Silent/Non-Rattling

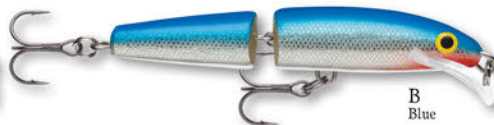
ACTION
Floating, Erratic
Evasive Sweeping

TARGET SPECIES
Multi-Species
Freshwater

TERMINAL
VMC® Black Nickel
Round Bend Hooks



ALB
Bleak



B
Blue



CLN
Clown



FT
Firetiger



G
Gold



GALB
Golden
Alburnus



GFR
Gold
Fluorescent Red



HS
Hot Steel



P
Perch



PD
Purpledescent



RT
Rainbow Trout



S
Silver



SFC
Silver Fluorescent
Chartreuse



TR
Brown Trout



YP
Yellow Perch

SPECIFICATIONS / COLORS

| Model No. | Running Depth | Body Length | Weight | Hooks | ALB | B | CLN | FT | G | GALB | GFR | HS | P | PD | RT | S | SFC | TR | YP |
|-----------|---------------|-------------|---------|-----------|-----|---|-----|----|---|------|-----|----|---|----|----|---|-----|----|----|
| SCRJ09 | 5' - 7' | 3-1/2" | 1/4 oz. | Two No. 6 | • | • | • | • | • | • | • | • | • | • | • | • | • | • | • |

US PATENT NUMBER D713925

⚠ WARNING: Cancer and Reproductive Harm www.P65Warnings.ca.gov (All items on this page pertain to this warning)



SCATTER RAP® DEEP HUSKY JERK®

CONSTRUCTION Durable Plastic
Deep Diving Scatter Lip

FEATURES Rattle

ACTION Suspending, Erratic
Evasive Sweeping

TARGET SPECIES Multi-Species
Freshwater

TERMINAL VMC® Black Nickel
Round Bend Hooks



BGH
Blue Ghost



CLN
Clown



FT
Firetiger



G
Gold



GBM
Glass Blue Minnow



GCL
Glass Clown



GMN
Glass Minnow



GP
Glass Perch



GPCL
Glass Pink Clown



GPP
Glass Purple Perch



GPSF
Glass Purple Sunfire



GTU
Green Tiger UV



HGH
Helsinki Ghost



HT
Hot Tiger



OGH
Olive Ghost



PCL
Pink Clown



PDS
Purpledescent



PRCL
Purple Clown



PTU
Pink Tiger UV



RFCW
Redfire Crawdad



S
Silver



SB
Silver Blue



YP
Yellow Perch

SPECIFICATIONS/COLORS

| Model No. | Running Depth | Body Length | Weight | Hooks | BGH | CLN | FT | G | GBM | GCL | GMN | GP | GPCL | GPP | GPSF | GTU | HGH | HT | OGH | PCL | PDS | PRCL | PTU | RFCW | S | SB | YP |
|-----------------|---------------|-------------|---------|-----------|-----|-----|----|---|-----|-----|-----|----|------|-----|------|-----|-----|----|-----|-----|-----|------|-----|------|---|----|----|
| SCRDHJ10 | 9' - 12' | 4" | 3/8 oz. | Two No. 6 | • | • | • | • | • | • | • | • | • | • | • | • | • | • | • | • | • | • | • | • | • | • | • |



SCATTER RAP® TAIL DANCER®

| | | | | |
|--|------------------------|---------------------------------------|-----------------------------|---------------------------------------|
| CONSTRUCTION | FEATURES | ACTION | TARGET SPECIES | TERMINAL |
| Premium Balsa Deep Diving Scatter Lip | Tapered Tail Rattle | Floating, Erratic Evasive Sweeping | Multi-Species Freshwater | VMC® Black Nickel Round Bend Hooks |



ALB
Bleak



BFL
Blue Flash



CLN
Clown



FLP
Flash Perch



FT
Firetiger



G
Gold



GALB
Golden Alburnus



GTU
Green Tiger UV



OTU
Orange Tiger UV



P
Perch



PD
Purpledescent



PTU
Pink Tiger UV



RDT
Red Tiger



RT
Rainbow Trout



S
Silver



YP
Yellow Perch

SPECIFICATIONS / COLORS

| Model No. | Running Depth | Body Length | Weight | Hooks | ALB | BFL | CLN | FLP | FT | G | GALB | GTU | OTU | P | PD | PTU | RDT | RT | S | YP | |
|-----------|---------------|-------------|----------|-----------|-----|-----|-----|-----|----|---|------|-----|-----|---|----|-----|-----|----|---|----|---|
| SCRTD09 | 11' - 19' | 3-1/2" | 7/16 oz. | Two No. 4 | • | • | • | • | • | • | • | • | • | • | • | • | • | • | • | • | • |

US PATENT NUMBER D767080

⚠ WARNING: Cancer and Reproductive Harm www.P65Warnings.ca.gov (All items on this page pertain to this warning)

NEW

Four New Colors



ULTRA LIGHT RIPPIN' RAP®

CONSTRUCTION
Tall & Skinny
External Scaled Plastic

FEATURES
Distinctive Loud BB Rattle
Long-Casting & Vertical Presentation

ACTION
Hard Vibrating
Sinking

TARGET SPECIES
Multi-Species
Freshwater

TERMINAL
VMC® Black Nickel
Round Bend Hooks



SPECIFICATIONS/NEW COLORS

| Model No. | Running Depth | Body Length | Weight | Hooks | CH | CHB | CLN | CSD | FPN | FT | GCH | GHP | GL | GPSQ | GSLM | GT | GTU | GYP | HS | HSD | HSP | OTU | PCL | PDS | PGS | PRCL | PTU | PUTU | RFCW |
|----------------|---------------|-------------|----------|-------------|----|-----|-----|-----|-----|----|-----|-----|----|------|------|----|-----|-----|----|-----|-----|-----|-----|-----|-----|------|-----|------|------|
| ULRPR03 | Variable | 1-1/8" | 1/16 oz. | No. 12 & 14 | • | • | • | • | • | • | • | • | • | • | • | • | • | • | • | • | • | • | • | • | • | • | • | • | |
| ULRPR04 | Variable | 1-1/2" | 3/16 oz. | No. 10 & 12 | • | • | • | • | • | • | • | • | • | • | • | • | • | • | • | • | • | • | • | • | • | • | • | • | |

Ripplin' Rap Sizes 05, 06 & 07 available (see page 44)



MINI FAT RAP®

| | | | | |
|--|---|---|--|--|
| CONSTRUCTION Premium Balsa Wood Through Wire Construction | FEATURES Wide Profile Long-Casting | ACTION Tight Swimming Slow Sinking | TARGET SPECIES Multi-Species Freshwater | TERMINAL VMC® Black Nickel Round Bend Hooks |
|--|---|---|--|--|



SPECIFICATIONS / COLORS

| Model No. | Running Depth | Body Length | Weight | Hooks | BTR | CW | FT | HMMD | OGMD | P | S |
|--------------|---------------|-------------|---------|------------|-----|----|----|------|------|---|---|
| MFR03 | 3' - 6' | 1-1/2" | 1/8 oz. | Two No. 12 | • | • | • | • | • | • | • |

ULTRA-LITE KIT

The Rapala® Pro Staff has hand-picked this exclusive combination of Rapalas, perfect when ultra-lite angling for any species of gamefish. **SPECIAL BONUS:** Rapala Lure Key Ring.

| | | | | |
|--|---|-------------------------------------|---|---|
| CONTENTS Pro-Picked Lures | FEATURES Ultra Light Sizes | ACTION Rapala Swimming | SPECIES Multi-Species Gamefish | BONUS Lure Key Ring Makes Great Gift |
|--|---|-------------------------------------|---|---|



SPECIFICATIONS / COLORS

| Model No. | Item Description |
|--------------|------------------|
| ULKT1 | Ultra-Lite Kit |



ULTRA LIGHT POP

CONSTRUCTION
Deep Cupped Lip
External Scaled Durable Plastic

FEATURES
Bulging Water Sound & Action
Rattle, Floating

ACTION
Light, Responsive
Surface Popper/Chugger

TARGET SPECIES
Multi-Species
Freshwater

TERMINAL
VMC® Black Nickel
Round Bend Hooks



CH
Chrome



CLN
Clown



F
Frog



FT
Firetiger



GCH
Gold Chrome



LF
Lime Frog



SB
Silver Blue



YP
Yellow Perch

SPECIFICATIONS/COLORS

| Model No. | Running Depth | Body Length | Weight | Hooks | CH | CLN | F | FT | GCH | LF | SB | YP |
|--------------|---------------|-------------|---------|------------|----|-----|---|----|-----|----|----|----|
| ULP04 | Topwater | 1-1/2" | 1/8 oz. | Two No. 12 | • | • | • | • | • | • | • | • |



ULTRA LIGHT SHAD

CONSTRUCTION
Weighted Body
External Scaled Durable Plastic

FEATURES
Long-Casting
Finesse Sinking

ACTION
Light, Responsive
Rolling Swimming

TARGET SPECIES
Multi-Species
Freshwater

TERMINAL
VMC® Black Nickel
Round Bend Hooks



CH
Chrome



CLN
Clown



FT
Firetiger



G
Gold



HS
Hot Steel



PCL
Pink Clown



PDS
Purplodescent



RT
Rainbow Trout



SB
Silver Blue



SD
Shad



TR
Trout



YP
Yellow Perch

SPECIFICATIONS/COLORS

| Model No. | Running Depth | Body Length | Weight | Hooks | CH | CLN | FT | G | HS | PCL | PDS | RT | SB | SD | TR | YP |
|--------------|---------------|-------------|---------|------------|----|-----|----|---|----|-----|-----|----|----|----|----|----|
| ULS04 | 4' - 5' | 1-1/2" | 1/8 oz. | Two No. 10 | • | • | • | • | • | • | • | • | • | • | • | • |



ULTRA LIGHT MINNOW

CONSTRUCTION Weighted Body
External Scaled Durable Plastic

FEATURES Long-Casting
Finesse Sinking

ACTION Light, Responsive
Wobble/Rolling

TARGET SPECIES Multi-Species
Freshwater

TERMINAL VMC® Black Nickel
Round Bend Hooks



SPECIFICATIONS/COLORS

| Model No. | Running Depth | Body Length | Weight | Hooks | CH | CLN | FT | G | HS | PCL | RT | SB | SD | TR | YP |
|--------------|---------------|-------------|---------|------------|----|-----|----|---|----|-----|----|----|----|----|----|
| ULM04 | 2' - 3' | 1-1/2" | 1/8 oz. | Two No. 10 | • | • | • | • | • | • | • | • | • | • | • |
| ULM06 | 2' - 3' | 2-1/2" | 1/8 oz. | Two No. 8 | • | • | • | • | • | • | • | • | • | • | • |



ULTRA LIGHT CRANK

CONSTRUCTION Weighted Body, Diving Lip
External Scaled Durable Plastic

FEATURES Easy Casting
Rattle, Floating

ACTION Aggressive Rolling
"Wounded-Minnow" Wobble

TARGET SPECIES Multi-Species
Freshwater

TERMINAL VMC® Black Nickel
Round Bend Hooks



SPECIFICATIONS/COLORS

| Model No. | Running Depth | Body Length | Weight | Hooks | CH | CLN | FT | G | HS | PCL | PDS | RT | SB | SD | TR | YP |
|--------------|---------------|-------------|---------|------------|----|-----|----|---|----|-----|-----|----|----|----|----|----|
| ULC03 | 4' - 8' | 1-1/2" | 1/8 oz. | Two No. 10 | • | • | • | • | • | • | • | • | • | • | • | • |

NEW



JIGGING SHADOW RAP®

Following in the footsteps of the original Rapala® Jigging Rap®, the much lighter Jigging Shadow Rap® features a slower darting action. Designed for vertical jigging, the broader silhouette, modern finishes and belly-flashing action are ideal for targeting wary fish, whether they are suspended or close to the bottom.

| | | | | |
|--|---|--|--|---|
| CONSTRUCTION Durable Plastic Body With Broader Silhouette | FEATURES Lead Free Zinc Weighted | ACTION Vertical Jigging Slow Darting Action | TARGET SPECIES Multi-Species Freshwater | TERMINAL VMC® Black Nickel Round Bend Center Treble Hook & Tail Hook |
|--|---|--|--|---|



SPECIFICATIONS / COLORS

| Model No. | Running Depth | Body Length | Weight | Hooks | BSR | BYR | GL | GPSQ | GSLM | GT | HLW | NP | PD | PEL | S | SML |
|-----------|---------------|-------------|---------|-----------|-----|-----|----|------|------|----|-----|----|----|-----|---|-----|
| JSDR09 | Variable | 3-1/2" | 5/8 oz. | One No. 6 | • | • | • | • | • | • | • | • | • | • | • | • |





JIGGING RAP®

CONSTRUCTION
Balance Weighted Body
Durable Plastic Tail

FEATURES
Center Line Tie
Sinking

ACTION
Vertical Jigging
Swims Down in Circles

TARGET SPECIES
Multi-Species
Freshwater

TERMINAL
VMC® Center Treble
Single Reverse Nose & Tail Hooks



SPECIFICATIONS/COLORS

| Model No. | Running Depth | Body Length | Weight | Hook | BG | CHB | CHR | CLN | FPN | G | GBT | GFR | GGT | GHP | GL | GPSQ | GRT | GSLM | GT | GTU | GYP | HSD | HSP | OTU | P | PD | PRT | PTU | PW | RFCW | RSD | RT | S | SFC | |
|-----------|---------------|-------------|----------|------------|----|-----|-----|-----|-----|---|-----|-----|-----|-----|----|------|-----|------|----|-----|-----|-----|-----|-----|---|----|-----|-----|----|------|-----|----|---|-----|---|
| W2 | Variable | 1-1/4" | 1/8 oz. | One No. 14 | • | • | • | • | • | • | • | • | • | • | • | • | • | • | • | • | • | • | • | • | • | • | • | • | • | • | • | • | • | • | |
| W3 | Variable | 1-1/2" | 3/16 oz. | One No. 12 | • | • | • | • | • | • | • | • | • | • | • | • | • | • | • | • | • | • | • | • | • | • | • | • | • | • | • | • | • | • | |
| W5 | Variable | 2" | 5/16 oz. | One No. 10 | • | • | • | • | • | • | • | • | • | • | • | • | • | • | • | • | • | • | • | • | • | • | • | • | • | • | • | • | • | • | |
| W7 | Variable | 2-3/4" | 5/8 oz. | One No. 7 | • | • | • | • | • | • | • | • | • | • | • | • | • | • | • | • | • | • | • | • | • | • | • | • | • | • | • | • | • | • | • |
| W9 | Variable | 3-1/2" | 7/8 oz. | One No. 6 | • | • | • | • | • | • | • | • | • | • | • | • | • | • | • | • | • | • | • | • | • | • | • | • | • | • | • | • | • | • | • |



JIGGING SHAD RAP®

CONSTRUCTION
Balance Weighted Body
Durable Plastic Tail

FEATURES
Center Line Tie
Sinking

ACTION
Vertical Jigging
Swims Down in Circles

TARGET SPECIES
Multi-Species
Freshwater

TERMINAL
VMC® Center Treble
Single Reverse Nose & Tail Hooks



B
Blue



G
Gold



GLOW

GCLN
Glow Clown



GLOW

GFT
Glow Firetiger



GLOW

GL
Glow



GLOW

GR
Glow Red



UV
BRIGHT

GTU
Green Tiger UV



UV
BRIGHT

MTU
Mossy Tiger UV



UV
BRIGHT

OTU
Orange Tiger UV



GLOW

P
Perch



PRL
Pearl



UV
BRIGHT

PTU
Pink Tiger UV



S
Silver



SD
Shad

SPECIFICATIONS / COLORS

| Model No. | Running Depth | Body Length | Weight | Hook | B | G | GCLN | GFT | GL | GR | GTU | MTU | OTU | P | PRL | PTU | S | SD |
|--------------|---------------|-------------|----------|------------|---|---|------|-----|----|----|-----|-----|-----|---|-----|-----|---|----|
| WSR02 | Variable | 1-1/4" | 1/8 oz. | One No. 14 | • | • | • | • | • | • | • | • | • | • | • | • | • | • |
| WSR03 | Variable | 1-1/2" | 3/16 oz. | One No. 10 | • | • | • | • | • | • | • | • | • | • | • | • | • | • |
| WSR05 | Variable | 2" | 5/16 oz. | One No. 8 | • | • | • | • | • | • | • | • | • | • | • | • | • | • |



SNAP RAP®

CONSTRUCTION
Balance Weighted Body
Plastic Glide Wing

FEATURES
Center Line Tie
Long-Casting, Sinking

ACTION
Darts Fast on Rod Snap
Quickly Glides Back Down

TARGET SPECIES
Multi-Species
Freshwater

TERMINAL
VMC® Center Treble
Single Reverse Nose & Tail Hooks



CH
Chrome



CHB
Chrome Blue



CHT
Chartreuse Tiger



FT
Firetiger



GHP
Glow Hot Perch



GLT
Glow Tiger



GOR
Gold Orange



GOT
Gold Olive Tiger



GT
Glow Fire Tiger



GYP
Glow Yellow Perch



HT
Hot Tiger

SPECIFICATIONS / COLORS

| Model No. | Running Depth | Body Length | Weight | Hook | CH | CHB | CHT | FT | GHP | GLT | GOR | GOT | GT | GYP | HT |
|--------------|---------------|-------------|----------|-----------|----|-----|-----|----|-----|-----|-----|-----|----|-----|----|
| SNR06 | Variable | 2-1/2" | 5/16 oz. | One No. 8 | • | • | • | • | • | • | • | • | • | • | • |
| SNR08 | Variable | 3-1/8" | 7/8 oz. | One No. 5 | • | • | • | • | • | • | • | • | • | • | • |

NEW

Four New Colors



SLAB RAP®

CONSTRUCTION
Forward Weighted Body
External Scaled Durable Plastic

FEATURES
Center Line Tie
Sinking

ACTION
Unique Design Allows
Various Techniques & Actions

TARGET SPECIES
Multi-Species
Freshwater

TERMINAL
VMC® Black Nickel
Round Bend Hooks



SPECIFICATIONS/NEW COLORS

| Model No. | Running Depth | Body Length | Weight | Hooks | CH | CHB | CLN | FPN | GCH | GHP | GL | GPSQ | GSLM | GT | GTU | GYP | HSP | OTU | P | PCL | PRCL | PTU | PUTU | RFCW |
|--------------|---------------|-------------|---------|------------|----|-----|-----|-----|-----|-----|----|------|------|----|-----|-----|-----|-----|---|-----|------|-----|------|------|
| SLR04 | Variable | 1-1/2" | 1/8 oz. | Two No. 12 | • | • | • | • | • | • | • | • | • | • | • | • | • | • | • | • | • | • | • | • |
| SLR05 | Variable | 2" | 1/4 oz. | Two No. 10 | • | • | • | • | • | • | • | • | • | • | • | • | • | • | • | • | • | • | • | • |
| SLR06 | Variable | 2-1/2" | 3/8 oz. | Two No. 8 | • | • | • | • | • | • | • | • | • | • | • | • | • | • | • | • | • | • | • | • |

⚠ WARNING: Cancer and Reproductive Harm www.P65Warnings.ca.gov (All items on this page pertain to this warning)



Rapala®

US PAT.

Rapala
Hand Ground Stainless

FILLET KNIVES & ACCESSORIES

With more guts than any other fish fillet knife, Rapala's knives are the ones that really taught the world how to fillet. Each fish fillet knife we make is constructed of premium steel with blades that are razor-sharp and built to last. Flexible blades ensure that every piece of your big catch gets from the water to your plate with ease.



FISH 'N FILLET®

FISH 'N FILLET®
SUPERFLEX

WITCH'S TOOTH
COLLECTOR FILLET

WITCH'S TOOTH
COLLECTOR FILLET

Finnish folklore believes that the witch's tooth locked inside each handle protects the user from harm. Carefully chosen materials are used to create a true masterpiece that is prized by all who own one. Stainless steel blade, handle of curly birch and reindeer antler accents, all packaged in a wooden slide top gift box. Sewn and riveted leather sheath.

| Model No. | Handle Length | Blade Length |
|--------------|---------------|--------------|
| WTCF6 | 4" | 6" |

Blade length may vary slightly due to hand craftsmanship.



A cherished gift item for knife collectors, packaged in a wooden, slide top gift box.

**PRESENTATION®
LAMINATES**



PRFBL6

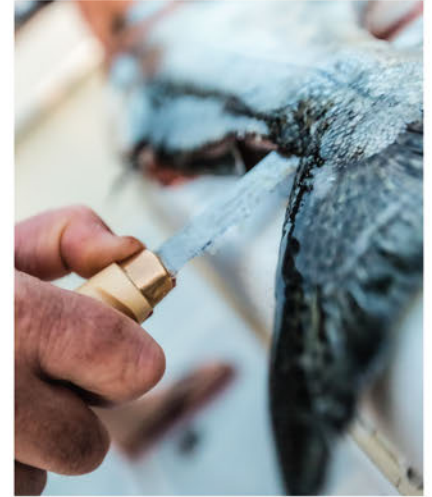
PRFGL6

FISH 'N FILLET®

The original features progressively tapered, full-tang blades of European stainless steel that take and hold an ultra-sharp edge. Birch handle with fine tooled leather sheath. Includes single-stage sharpener to maintain razor sharp edge.

| Model No. | Handle Length | Blade Length |
|------------------|---------------|--------------|
| BPFNF4SHI | 3-7/8" | 4" |
| BPFNF6SHI | 4-3/4" | 6" |
| BPFNF7SHI | 5" | 7-1/2" |
| BPFNF9SHI | 5" | 9" |

Handle: Reinforced Birch/Varnished.
Sheath: Genuine Tooled Leather.
Blade: Handground European Stainless Steel.
Actual blade length may vary slightly due to hand craftsmanship.



**FISH 'N FILLET®
SUPERFLEX**

Extra thin blade has the greatest flexibility and control ever. Non-stick coating lets fillets effortlessly fall away. Razor-sharp, handground stainless steel blade features through tang construction. Polished brass ferrule. Tooled leather sheath.

| Model No. | Handle Length | Blade Length |
|---------------|---------------|--------------|
| FNFSF4 | 3-7/8" | 4" |
| FNFSF6 | 4-3/4" | 6" |
| FNFSF7 | 5" | 7-1/2" |

Handle: Reinforced Birch/Hand Ribbed/Baked.
Sheath: Genuine Tooled Leather.
Blade: Handground European Stainless Steel.
Actual blade length may vary slightly due to hand craftsmanship.

**PRESENTATION®
LAMINATES**

The Nordic design represents a modern classic. Brown laminated handle features a polished stainless steel blade. Grey laminated handle has a non-stick coated blade. Progressive tapered blade with through tang construction for leverage. Coordinated genuine leather tooled sheath, snap closure.

| Model No. | Handle Length | Blade Length |
|---------------|---------------|--------------|
| PRFBL6 | 4-3/4" | 6" |
| PRFGL6 | 4-3/4" | 6" |

Handle: Reinforced Birch/Varnished.
Sheath: Genuine Tooled Leather.
Blade: Handground European Stainless Steel.
Actual blade length may vary slightly due to hand craftsmanship.



SOFT GRIP® FILLET

The famous Rapala flexible blade with a no-slip, soft grip handle. Enlarged finger guard for added safety. Includes coordinated black textured sheath and single-stage sharpener.

| Model No. | Handle Length | Blade Length |
|-----------------|---------------|--------------|
| BP704SHI | 3-7/8" | 4" |
| BP706SHI | 4-3/4" | 6" |
| BP707SHI | 5" | 7-1/2" |
| BP709SHI | 5" | 9" |

Handle: Thermoplastic Soft Grip
 Sheath: Artificial Leather
 Blade: Handground Stainless Steel

6" FISH PRO FILLET

The highly polished blade easily cuts through tough skin and bone structure. Made from handground stainless steel with a flexible progressively tapered, full tang blade. Perfectly balanced ergonomic handle with safety guard. Technical compression sheath securely covers blade for storage.

| Model No. | Handle Length | Blade Length |
|-------------|---------------|--------------|
| FPF6 | 5" | 6" |

Handle: Soft Touch Thermoplastic
 Sheath: Compression Molded Resin
 Blade: Handground Stainless Steel

EZ GLIDE® FILLET

Effortlessly fillet with the classic fillet knife style but with non-stick coating. The blade's scalloped sides introduce air between blade and fish to prevent sticking and tearing. Textured, soft-grip handle. Easy-clean open sheath.

| Model No. | Handle Length | Blade Length |
|-------------|---------------|--------------|
| REZ7 | 4" | 7" |

Handle: Textured Thermoplastic
 Sheath: Snap On, Easy-Clean Molded Resin
 Blade: PTFE Coated Handground Stainless Steel



DELUXE FALCON™ FILLET

The Deluxe Falcon Fillet has a super sharp stainless steel blade and enlarged finger guard. The multi-purpose sheath with built-in fine grade ceramic-sticks sharpener protects plus allows for quick “in-the-field” sharpening.

| Model No. | Handle Length | Blade Length |
|----------------|---------------|--------------|
| BPI34SH | 4" | 4" |
| BPI36SH | 4-3/4" | 6" |

Handle: High Strength Polymer
 Sheath: Molded Resin with Built-in Sharpener
 Blade: Stainless Steel



RAPALA® SPOON FILLET

The Rapala Spoon Fillet offers trout & salmon anglers a quick and easy way to open and clean entrails, remove bloodline, then steak or fillet with one tool. Easy-clean open sheath allows you to wash off completely.

| Model No. | Handle Length | Blade Length |
|--------------|---------------|--------------|
| RSPF9 | 4" | 9" |

Handle: High Strength Polymer
 Sheath: Molded Resin
 Blade: Handground Stainless Steel



HAWK FILLET

Contoured hard plastic handle with textured finish for sure grip and substantial finger guard to protect against slips. Six-inch, stainless steel blade. Available in 4", 6" or 8" blade length 36 piece displays.

| Model No. | Handle Length | Blade Length |
|--------------|---------------|--------------|
| I26SP | 4-3/4" | 6" |

I26BX 36 Piece Retail Display Bucket
 (see page 125)

Handle: High Strength Polymer
 Blade: Stainless Steel



SALTWATER FILLET

White "Comfort Grip" handle resists heat and fatigue. Super sharp stainless steel blade for years of service. Flexible tip for delicate work. Easy-clean sheath.

| Model No. | Handle Length | Blade Length |
|---------------|---|--------------|
| RSF7 | 5" | 7" |
| RSF7BX | 24 piece Retail Display (see page 125) | |

Handle: White Comfort Grip. Sheath: Easy-Clean Open Molded Resin. Blade: Stainless Steel.



4" CERAMIC UTILITY KNIFE

Super-sharp, super-tough ceramic blades are 2X sharper and have 15X edge retainment compared to steel. Lightweight, non-porous and incredibly corrosion resistant, they never rust. Compression sheath.

| Model No. | Handle Length | Blade Length |
|----------------|---|--------------|
| RCUKB4 | 4-1/2" | 4" |
| RCUKB4B | 24 piece Retail Display (see page 125) | |

Handle: Black Molded Soft Grip. Sheath: Molded Resin. Blade: Ceramic with steel insert.



4" CERAMIC BAIT KNIFE

This white handled version resists heating up when in the sun. Same 2X sharper & 15X edge retainment features as the Ceramic Utility Knife. Never needs sharpening. White compression sheath.

| Model No. | Handle Length | Blade Length |
|----------------|---|--------------|
| RCBKW4 | 4-1/2" | 4" |
| RCBKW4B | 24 piece Retail Display (see page 125) | |

Handle: White Molded Soft Grip. Sheath: Molded Resin. Blade: Ceramic with steel insert.



4" BAIT KNIFE

The perfect size for preparing bait and performing other boatside tasks. Serrated upper blade and razor sharp, butt to tip blade. Lanyard ready, or hang from sheath loop for one-handed access. Easy-clean open sheath.

| Model No. | Handle Length | Blade Length |
|---------------|---|--------------|
| RSB4 | 5" | 4" |
| RSB4BX | 24 piece Retail Display (see page 125) | |

Handle: White Comfort Grip. Sheath: Molded Resin. Blade: Stainless Steel.



5" FOLDING FISH PRO FILLET

Folding convenience with easy release lock-back design. Made from handground, highly polished stainless steel with a progressively tapered flexible blade. Easily cuts through bone structure and tough skin. Comfort grip.

| Model No. | Handle Length | Blade Length |
|--------------|---------------|--------------|
| FFPF5 | 6-1/4" | 5" |

Handle: Ergonomic with Soft Touch Thermoplastic Blade: Handground Stainless Steel



TWO-STAGE SHARPENER

A sharpener that is simple to use. Ceramic wheels hold the knife at correct angle to quickly restore a coarse edge, while fixed ceramic sticks put a fine razor-sharp edge to the knife.

| Model No. | Item Description |
|-------------|---------------------|
| RMKS | Two-Stage Sharpener |



KNIFE SHARPENERS

Keep a razor sharp edge on virtually any knife with these simple, yet effective sharpeners. A few light strokes against the locked in ceramic sticks and quickly bring your knife back to "like new".

| Model No. | Item Description |
|---------------|--|
| SH1 | Single-Stage Sharpener (fine) |
| SH2 | Two-Stage Sharpener (coarse & fine) |
| RSHD-1 | 36 Piece SH2 Retail Display (see page 125) |



RAPALA® FILLET GLOVE

Flexible Steel Strands offer exceptional cut and slash resistance, while seamless construction provides the comfort, fit and dexterity of a knit glove.

| Model No. | Item Description |
|--------------|-----------------------|
| BPFGS | Fillet Glove - Small |
| BPFGM | Fillet Glove - Medium |
| BPFGL | Fillet Glove - Large |

FINLAND
* 1928 *

CLASSIC BIRCH

COLLECTION



CLIP POINT



DROP POINT



BIRD KNIFE



GUT HOOK



CAPING

RAPALA® CLASSIC BIRCH COLLECTION

The same company that makes the Classic Rapala® Birch Handle Fish 'n Fillet® has taken their 90 years of knife making craftsmanship and developed a line of knives that brings their passion and uncompromising standards to the hunting category.



CLIP POINT

- Stout, strong design for puncturing
- Curved tip makes blade thinner with an exceptionally sharp point
- Razor-sharp blade of German stainless steel
- Classic Rapala birch handle
- Through tang construction
- Molded one-piece scabbard for safe storage

| Model No. | Item Description |
|---------------|------------------|
| CBCP45 | Clip Point 4.5" |

DROP POINT

- Versatile all-purpose drop point
- Robust thick point for tough tasks
- Razor-sharp blade of German stainless steel
- Classic Rapala birch handle
- Through tang construction
- Molded one-piece scabbard for safe storage

| Model No. | Item Description |
|--------------|------------------|
| CBDP4 | Drop Point 3.75" |

BIRD KNIFE

- Mid-size, semi flex blade, ideal for detailed cuts along bone
- Designed for fowl and small game
- Razor-sharp blade of German stainless steel
- Classic Rapala birch handle
- Through tang construction
- Molded one-piece scabbard for safe storage

| Model No. | Item Description |
|--------------|------------------|
| CBBK4 | Bird Knife 3.75" |

GUT HOOK

- Precision hook gap, sharpened radius perfect for field dressing game
- Wide tip reduces punctures and allows for flawless work
- Razor-sharp blade of German stainless steel
- Through tang construction
- Molded one-piece scabbard for safe storage

| Model No. | Item Description |
|--------------|------------------|
| CBGH4 | Gut Hook 3.75" |

CAPING

- Compact and maneuverable, ideal for tight detail work
- Slight drop point with a surgical edge
- Razor-sharp blade of German stainless steel
- Classic Rapala birch handle
- Through tang construction
- Molded one-piece scabbard for safe storage

| Model No. | Item Description |
|--------------|------------------|
| CBC35 | Caping 3.5" |

LITHIUM ION CORDLESS FILLET & KNIFE COMBO

Lithium Ion batteries provide a consistent speed and torque from fillet to fillet, without reduced power or slow down as battery power wanes.

- 80 minutes of continuous runtime
- Comfortable, relaxed grip and advanced air flow design

LITHIUM ION CORDLESS FILLET

- Lithium ION Fillet Knife
- 7-1/2" stainless steel reciprocating blades
- A Lithium ION battery pack
- Direct 110V/220V plug-in charger

LITHIUM ION CORDLESS FILLET KNIFE COMBO

- Lithium ION Fillet Knife
- 6" and 7-1/2" stainless steel reciprocating blades
- Two Lithium ION battery packs
- Direct 110V/220V plug-in charger
- Padded EVA storage case

Model No.

Item Description

RRFN

Lithium Ion Cordless Fillet

RRFNCS

Lithium Ion Cordless Fillet Knife Combo



Combo Includes Padded EVA Case

LITHIUM ION CHARGING COMBO

Replacement or backup battery for Rapala Lithium Ion Cordless Fillet Knife. Perfect addition for outpost use, extends fillet time an additional 80 minutes.

- Direct 110V/220V plug-in charger
- Fast charge time
- Battery provides 80 minutes of continuous runtime



Model No.

Item Description

RRFNB

Lithium Ion Charging Combo

DELUXE CORDLESS FILLET KNIFE SET

With no cords to get in the way, make even the toughest filleting chores a quick and easy task.

- Two removable rechargeable battery packs
- Charging base; battery charge time of 3 hours and 45 minutes
- 6" and 7-1/2" stainless steel reciprocating blades
- Quiet long-lasting motor with advanced air flow design
- Comfortable, relaxed grip
- Blow molded plastic storage case

| Model No. | Item Description |
|--------------|----------------------------------|
| PGEFR | Deluxe Cordless Fillet Knife Set |



Includes Storage Case



12V DC CHARGER

Recharge in the field from standard 12V battery. Plug into any vehicle or boat for in-the-field charging. Great for outpost trips where the knife sees a lot of shore lunch filleting. Requires charging station that comes with PGEFR Knife Set.

| Model No. | Item Description |
|-----------------|------------------|
| PGEFR-DC | 12V DC Charger |

RECHARGEABLE FILLET KNIFE BATTERY

Never run out of power. With up to 30 minutes true runtime, a backup or replacement battery assures that there will always be enough power to keep on filleting. Charge one battery while the other is in use.

| Model No. | Item Description |
|----------------|----------------------|
| PGEFR-B | Rechargeable Battery |



DELUXE ELECTRIC FILLET KNIFE SET

Plug into any wall outlet, connect to trolling motor battery posts or plug into car or boat DC outlet for full filleting power.

- Adapters for 110 AC, 12V Post Clips & 12V Lighter Plug
- 18 foot 110V power cord
- 6" and 7-1/2" stainless steel reciprocating blades
- Quiet long-lasting motor with advanced air flow design
- Comfortable grip
- Blow molded plastic storage case

| Model No. | Item Description |
|--------------|----------------------------------|
| PGEF1 | Deluxe Electric Fillet Knife Set |



Includes Storage Case



Combo Includes Padded EVA Case

HEAVY-DUTY ELECTRIC FILLET & KNIFE COMBO

With twice the blade speed and three times the power of standard electric fillet knives, you can easily cut through rib bones and backbones.

- Advanced air flow design cools motor and reduces vibration
- 8 foot 110V power cord

HEAVY-DUTY ELECTRIC FILLET KNIFE

- Heavy-Duty Electric Fillet Knife
- 7-1/2" stainless steel reciprocating blades

HEAVY-DUTY ELECTRIC FILLET KNIFE COMBO

- Heavy-Duty Electric Fillet Knife
- 6" and 7-1/2" stainless steel reciprocating blades
- Fillet fork
- Padded EVA storage case

| Model No | Item Description |
|-----------------|--|
| HDEFAC | Heavy-Duty Electric Fillet |
| HDEFACSC | Heavy-Duty Electric Fillet Knife Combo |



ELECTRIC FILLET KNIFE SET

ELECTRIC FILLET KNIFE SET

(SHOWN ON TOP LEFT)

- 18 foot 110V power cord
- 6" and 7-1/2" stainless steel reciprocating blades
- Advanced air flow design
- Comfortable grip
- Blow molded plastic storage case



| Model No. | Item Description |
|---------------|---------------------------|
| PGEFAC | Electric Fillet Knife Set |



ELECTRIC FILLET KNIFE & FORK

ELECTRIC FILLET KNIFE & FORK

(SHOWN ON BOTTOM LEFT)

- Includes a Fillet Fork with stainless steel prongs to securely hold your catch
- 7 foot 110V power cord
- 7-1/2" stainless steel reciprocating blades
- Advanced air flow design
- Comfortable grip

| Model No. | Item Description |
|---------------|------------------------------|
| REF-AC | Electric Fillet Knife & Fork |



REPLACEMENT BLADES

Fit all models of Rapala Electric Fillet Knives.

| Model No. | Blade Finish | Blade Length |
|---------------|----------------------------------|--------------|
| CEFB6 | Non-Stick Coated Stainless Steel | 6" |
| CEFB7 | Non-Stick Coated Stainless Steel | 7-1/2" |
| PGEFB6 | Stainless Steel | 6" |
| PGEFB7 | Stainless Steel | 7-1/2" |
| PGEFB9 | Stainless Steel | 9" |

PRO SERIES FILLET/PREP BOARD

The "Professional Series" fillet boards are available in several sizes. Perfect flat working area for any fishing, hunting, kitchen & camping needs. Juice groove keeps liquids from spilling off edges. FDA & USDA approved HDPE food grade plastic.

| Model No. | Item Description | Dimensions |
|----------------|------------------------------|-------------------|
| PSB1232 | Pro Series Fillet/Prep Board | 11-1/2" x 31-1/2" |
| PSB1624 | Pro Series Fillet/Prep Board | 15-1/2" x 23-1/2" |
| PSB1632 | Pro Series Fillet/Prep Board | 15-1/2" x 31-1/2" |
| PSB1948 | Pro Series Fillet/Prep Board | 18-1/2" x 47-1/2" |
| PSB2448 | Pro Series Fillet/Prep Board | 23-1/2" x 47-1/2" |



FILLET 'N CARRY BOARD

A sportsman's dream, the Fillet 'n Carry is designed with a unique routed bottom that fits securely on 4, 5 & 6 gallon buckets. Large enough for any filleting task with a large oval hole to pass waste into bucket below. This board includes knife slot, beverage holder and juice groove to eliminate spillage of liquids. FDA & USDA approved HDPE food grade plastic.

| Model No. | Item Description | Dimensions |
|-------------|-----------------------|-------------------|
| FNCB | Fillet 'n Carry Board | 15-1/2" x 23-1/2" |



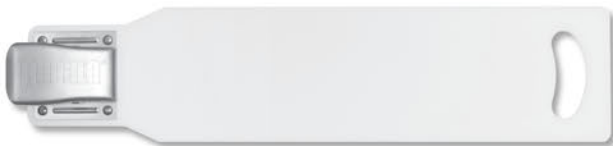
(bucket not included)



FAT BOY FILLET BOARD

Compact for transporting and storage, the Fat Boy Fillet Boards have ample room, with a wide surface to fillet all species of fish. Heavy-duty sure-grip clamp with built-in handle. FDA & USDA approved HDPE food grade plastic.

| Model No. | Item Description | Dimensions |
|----------------|--------------------------|-------------------|
| FBB1219 | Fat Boy II Fillet Board | 11-1/2" x 18-1/2" |
| FBB1224 | Fat Boy III Fillet Board | 11-1/2" x 23-1/2" |
| FBB1232 | Fat Boy IV Fillet Board | 11-1/2" x 31-1/2" |



PRO FILLET BOARD WITH CLAMP

Traditional fillet board design. Unique bottom groove allows board to securely sit on top of 4, 5 & 6 gallon buckets. Heavy-duty sure-grip clamp with built-in handle. FDA & USDA approved HDPE food grade plastic.

| Model No. | Item Description | Dimensions |
|-------------|--------------------------|------------------|
| PFBC | Pro Fillet Board w/Clamp | 5-1/2" x 23-1/2" |



FOLDING FILLET BOARD WITH CLAMP

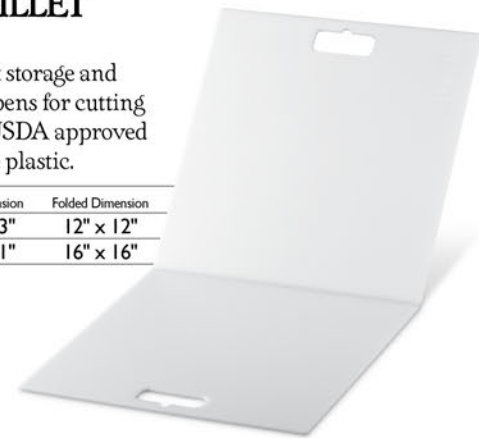
Folds for compact storage and transport. Heavy-duty, sure-grip clamp holds folded board securely. Perfect for fishing, hunting, the kitchen and camping. FDA & USDA approved HDPE food grade plastic.

| Model No. | Open Dimension | Folded Dimension |
|-----------------|----------------|------------------|
| RFFBC823 | 7-1/2" x 23" | 7-1/2" x 13-1/4" |

FOLDING FILLET BOARD

Folds for compact storage and transport, then opens for cutting surface. FDA & USDA approved HDPE food grade plastic.

| Model No. | Open Dimension | Folded Dimension |
|----------------|----------------|------------------|
| FSB1223 | 12" x 23" | 12" x 12" |
| FSB1631 | 16" x 31" | 16" x 16" |



R12[®]

LITHIUM



R12[®] BATTERY 2Ah
& CHARGING BASE



R12[®] LITHIUM SERIES

Rapala[®] R12[®] Series fishing accessories redefine fishing productivity. Juice up all your Rapala[®] R12[®] fishing accessories with the same Lithium ION 2Ah battery. Fueled for action, the R12's battery delivers the strength, durability and reliability to keep you on the water longer.



R12[®] LITHIUM
AERATOR



R12[®] LITHIUM
SPOTLIGHT LANTERN



R12[®] HEAVY-DUTY
LITHIUM FILLET KNIFE

NEW

R12[®] LITHIUM

R12[®] HEAVY-DUTY LITHIUM FILLET KNIFE

- 80 minutes of continuous runtime on a single 2Ah Lithium ION battery charge
- Twice the speed and three times the torque of other cordless fillet knives
- Radical ergonomic design features a positive-force power button
- LED light for filleting in low light conditions
- On-board LED power gauge to monitor battery status
- 7-1/2" PTFE coated blade
- One R12 2Ah Lithium ION battery
- Compact charging base; battery charge time of 4-1/2 hours
- Two year warranty

Model No.

R12HDRFS

Item Description

R12 HD Lithium Fillet Knife

PATENT PENDING



Includes One R12 Battery Pack and a Compact Charging Base



Ergonomically designed to minimize fatigue during even the biggest fillet marathons.



R12 LITHIUM

R12® HEAVY DUTY LITHIUM FILLET KNIFE COMBO

Lithium Ion batteries provide a consistent speed and torque from fillet to fillet, without reduced power or slow down as battery power wanes.

- 80 minutes of continuous runtime
- Twice the speed and three times the torque of other cordless fillet knives
- LED light for filleting in low light conditions
- On-board LED power gauge to monitor battery status
- 6" and 7-1/2" non-stick coated stainless steel reciprocating blades
- Two R12 2 Ah Lithium ION battery packs
- Rapid charging base; battery charge time of 1 hour
- Radical ergonomic design features a positive-force power button
- Padded EVA storage case
- Two year warranty

| Model No. | Item Description |
|----------------|---|
| R12HDRF | R12 HD Lithium Fillet Knife Combo PATENT PENDING |



Includes Padded EVA Case



Includes Two R12 Battery Packs and a Rapid 1-Hour Charging Base



R12 LITHIUM R12® CHARGING BASE

- 2 amps rapid charging, battery charge time of 1 hour
- Built-in cell optimization, smart charging
- Battery charging status light indicator
- Two year warranty

| Model No. | Item Description |
|--------------|-------------------|
| R12CB | R12 Charging Base |



R12 LITHIUM R12® BATTERY 2AH

- 2 Ah Lithium ION battery pack
- On-board circuit management protects from overheating and overloads
- Individual cell monitoring prevents cell damage and maximizes battery life
- Two year warranty

| Model No. | Item Description |
|-------------|------------------|
| R12B | R12 Battery 2Ah |

NEW

R12[®]LITHIUM

R12[®] LITHIUM AERATOR

- Provides up to 35 hours of runtime on a single 2Ah Lithium ION battery charge
- High/Low and interval air output settings allow user to adjust airflow to accommodate different live bait requirements
- On-board LED power gauge to monitor battery status
- Flexible air hose and high output aerator stone
- Includes one SmartHub[®] Flat Mount and one SmartHub[®] Bucket Mount with mounting screws and high-strength 3M[™] VHB[™] tape
- Two year warranty

| Model No. | Item Description |
|--------------|---------------------|
| R12LA | R12 Lithium Aerator |

Battery & Charging Base Not Included



SmartHub[®] Flat Mount



SmartHub[®] Bucket Mount



Battery Not Included

NEW

R12[®] LITHIUM

R12[®] LITHIUM SPOTLIGHT LANTERN

- Articulating, adjustable head for directional light control
- Bright LED output, 1000 Lumens
- On-board LED power gauge to monitor battery status
- Recessed hanging loop
- Two year warranty

SPOTLIGHT

- Low, medium, high and strobe
- Max runtime, spotlight 5 hours when utilizing a 2Ah Lithium ION battery

LANTERN

- Low, medium, high and UV for charging glow lures
- Max runtime, lantern 17 hours when utilizing a 2Ah Lithium ION battery

| Model No. | Item Description |
|---------------|-------------------------------|
| R12SLT | R12 Lithium Spotlight Lantern |

Battery & Charging Base Not Included



Battery Not Included



Battery Not Included





TOOLS & ACCESSORIES

Rapala offers a full range of tools and accessories from pliers to scales, scissors and combos. Some of them are true, trusted classics, while others are on the leading edge of modern technology, innovation and design. Rapala's proprietary designs have been created and manufactured to meet fishermen's needs worldwide, from ultra light fishing on lakes and rivers & streams to heavy-duty saltwater pursuits. The classic to modern designs reinforce our commitment to style and function.

FLOATING FISH GRIPPER

Make fast work of landing and releasing your catch without harm to you or the fish. Securely hold fish with one-hand. Quick release mechanism holds strong, yet releases with ease. Built from durable, molded heavy-duty plastic for ultimate corrosion resistance. Includes wrist lanyard.

| Model No. | Item Description |
|----------------|--|
| RFFG6 | 6" Floating Fish Gripper |
| RFFG9 | 9" Floating Fish Gripper |
| RFFG6-B | 16-piece Retail Display (see page 126) |
| RFFG9-B | 20-piece Retail Display (see page 126) |

US PATENT NUMBER D803979



The fish gripper makes handling fish safe and easy for anyone to use.



50 LB. DIGITAL SCALE/FISH GRIPPER

This deluxe, digital scale model is packed with upgraded features. Start off with rugged high-grade stainless steel construction for unmatched toughness against fresh and saltwater environments. The digital scale allows measurements in lb/oz, decimal lbs., or kgs while the large, easy-to-read display is big enough to see in pictures. Water resistant scale runs 600 hours on 2 AAA batteries (not included) thanks in part to the 2 minute auto shut-off. Wrist lanyard keeps it on board.

| Model No. | Item Description |
|--------------|-----------------------------------|
| DFG50 | 50 lb. Digital Scale/Fish Gripper |



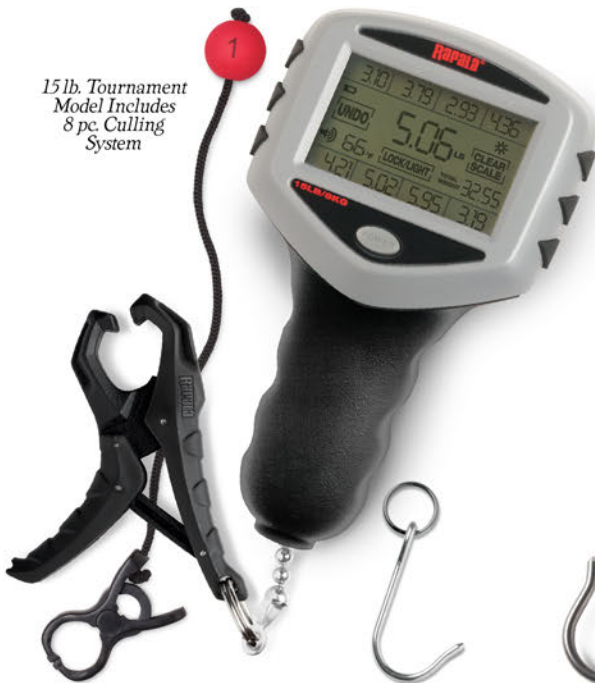
50 LB. MECHANICAL SCALE/FISH GRIPPER

Quickly and easily lift and weigh your catch with one hand. Pull open jaws, slip over the toothiest fish, then lift and accurately measure weight on the easy-to-read spring-loaded scale. Quick release mechanism sends catch back to fight another day. Corrosion resistant aluminum construction will provide service for years to come. Soft-grip handle gives the ultimate in slip-resistant grip and comfort while wrist lanyard ensures only the fish goes back in the drink. Weight indicated in one pound increments.

| Model No. | Item Description |
|--------------|--------------------------------------|
| MFG50 | 50 lb. Mechanical Scale/Fish Gripper |



15 lb. Tournament Model Includes 8 pc. Culling System



TOUCH SCREEN SCALES

Large digital scale with 8 storage locations. Record and position catch in weight total. Displays lbs/oz, decimal lbs or kgs Fish friendly gripper & hook. 400 hours on 2-AA batteries (not included). Back-up memory. RTDS-15 includes 8 pc. culling system.

| Model No. | Item Description |
|----------------|---------------------------|
| RTDS-15 | 15 lb. Tournament Scale |
| RTDS-50 | 50 lb. Touch Screen Scale |

US PATENT NUMBER D803978, D803977



COMPACT 50 LB. TOUCH SCREEN SCALE

Displays weight in lbs/oz, decimal lbs. or kgs increments. Record and position your current catch in your weight total. Bin total weight is continually displayed, with option to see weight in each bin. Back light illumination. 2 AAA batteries (not included).

| Model No. | Item Description |
|----------------|-----------------------------------|
| RCTDS50 | Compact 50 lb. Touch Screen Scale |



15 & 50 LB. DIGITAL SCALE

Compact & accurate with large digital display, tare weight, lighted display, sum total memory in a water resistant design. Has memory to track weight totals. Perfect size for convenient storage in tacklebox or boat glove. Weighs in pounds or kilograms.

| Model No. | Item Description |
|-----------------|----------------------|
| RGSDS-15 | 15 lb. Digital Scale |
| RGSDS-50 | 50 lb. Digital Scale |



25 LB. MINI DIGITAL SCALE

Powered by one lithium coin battery (included) with tare weight function and 4 minute auto shutoff. Water resistant. Chrome plated hook. Weighs in pounds or kilograms.

| Model No. | Item Description |
|----------------|---------------------------|
| RMDS-25 | 25 lb. Mini Digital Scale |



50 LB. DIGITAL SCALE

Compact and extremely accurate, this 50 lb. digital scale offers high-end features at a value price. Large grip handle. Weighs in pounds or kilograms.

| Model No. | Item Description |
|----------------|----------------------|
| RSDS-50 | 50 lb. Digital Scale |



25 LB. MECHANICAL SCALE

Compact design with top view features easy-to-read increments in both pounds and kilograms. 32" measuring tape. No batteries required.

| Model No. | Item Description |
|----------------|-------------------------|
| RSMS-25 | 25 lb. Mechanical Scale |



50 LB. MINI DIGITAL SCALE

The Mini Digital Scale measures up to 50 lbs. with precision accuracy. Pocket size features digital display & tare weight. 4 minute shutoff feature ensures 400 hour life with one 9V battery (not included). Chrome plated hook and water resistant design. Weighs in pounds or kilograms.

| Model No. | Item Description |
|----------------|---------------------------|
| RMDS-50 | 50 lb. Mini Digital Scale |



15, 25 & 50 LB. TUBE SCALES

Stainless steel hook, spring & handle with aluminum tube. Weighs in pounds or kilograms. Marker slide remains at maximum weight.

| Model No. | Item Description |
|----------------|-------------------|
| RMWS-15 | 15 lb. Tube Scale |
| RMWS-25 | 25 lb. Tube Scale |
| RMWS-50 | 50 lb. Tube Scale |



50 LB. HIGH CONTRAST DIGITAL SCALE

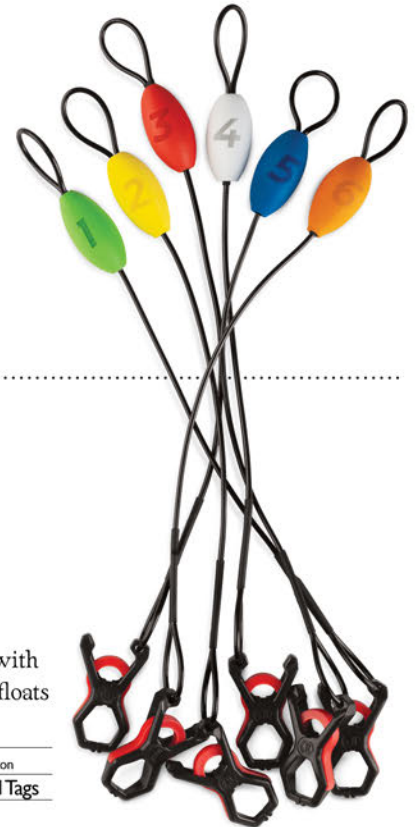
Packed with features, the reverse image LCD illuminated screen makes reading the light text on dark background easy, even on bright, sunny days. The directional pad operation offers familiar and intuitive navigation through the menu options. 8 storage bins. Choose lb/oz, decimal lbs or kgs Tare weight and memory back-up. Quick reference for min. & max. bin & total weight. Fish friendly gripper. Runs on 2 AAA batteries (not included).

| Model No. | Item Description |
|----------------|---|
| RHCDS50 | 50 lb. High Contrast Digital Scale US PATENT NUMBER D803978, D803977 |



Alternate stainless steel hook included.

Fish friendly gripper for fast, safe weighing



LIP GRIP CULL TAGS

Six-piece culling system that allows easy management of your catch. Heavy-duty non-corrosive construction with non-penetrating fish friendly clips. Multicolored EVA floats with laser etched numbers that will not rub off.

| Model No. | Item Description |
|--------------|--------------------|
| RLGCT | Lip Grip Cull Tags |



100 LB. DIGITAL SCALE

A perfect scale when taking photos or filming. The front and back screens show weight simultaneously to both angler & observer. Three weight display options, choose lb/oz, decimal lbs or kgs. Ambient temp displays current air temperature. Tare weight allows for weighing of fish in a container, without including the weight of the container in the reading. The water resistant ergonomic comfort handles are built for two handed operation when handling a heavy catch. Heavy-duty fixed reinforced hanger & chrome plated hook. Requires 2 AA batteries (not included).

| Model No. | Item Description |
|---------------|-----------------------|
| RDS100 | 100 lb. Digital Scale |





Neoprene Sheath



Coil Lanyard & Carabiner

7" ELITE PLIERS

CERAKOTE

Armed with high performance, lightweight Cerakote® coating which protects against abrasion, corrosion & UV rays. Patented "Mag Spring" keeps jaws open and ready, flip the switch & "Mag Lock" tightly secures jaws for safe storage. Hybrid jaws with interlocking front teeth. Flat area in back for gripping line and leaders. Replaceable carbide cutter blades cut all braid, monofilament, fluorocarbon line & light wire up to 15 lbs. Built-in crimping tool & robust handles. Neoprene sheath, coil lanyard & carabiner included.

| Model No. | Item Description |
|--------------|------------------|
| RESP7 | 7" Elite Pliers |

US PATENT NUMBER D787015, PATENT PENDING



Includes sheath.

MAG SPRING PLIERS

A huge hit since the introduction, these pliers utilize an ingenious patented "Mag-Spring" system that keeps pliers open and ready. No more fumbling around to open while your other hand is busy holding a fish or rod. Off-set design with serrated front teeth and vented soft touch handles for a tight secure grip. Built-in line cutter. 420 stainless steel with tin-nickel alloy plating. Lanyard ready. Includes pivoting, quick-draw sheath with belt loop and clip.

| Model No. | Item Description |
|--------------|----------------------|
| RMSP4 | 4" Mag Spring Pliers |
| RMSP6 | 6" Mag Spring Pliers |
| RMSP8 | 8" Mag Spring Pliers |

US PATENT NUMBER D787015, D787014, D787013



6-1/2" ALUMINUM PLIERS

Rugged, super lightweight, corrosion resistant pliers. Internal spring keeps them open for easy one-handed operation. Replaceable tungsten cutters, split ring tool, split shot crimper. Includes sheath.

| Model No. | Item Description |
|--------------|------------------------|
| RAPC6 | 6-1/2" Aluminum Pliers |



STAINLESS STEEL PLIERS

Side cutter for cutting thin wire leaders and hooks, Rapala lure tuning tool, split shot crimper & split ring tool on the nose. Soft grip handles with leaf spring. Includes hand lanyard.

| Model No. | Item Description |
|--------------|-------------------------------|
| RSSP6 | 6-1/2" Stainless Steel Pliers |
| RSSP8 | 8-1/2" Stainless Steel Pliers |



5" MINI PLIERS

Compact needle nose pliers are a perfect size to store in pocket or tacklebox. Durable nickel plated carbon steel, co-molded handles with leaf spring for one-handed operation. Light duty side cutters.

| Model No. | Item Description |
|---------------|------------------|
| RPLR-5 | 5" Mini Pliers |



FISHERMAN'S PLIERS

Durable nickel plated carbon steel, co-molded handles with leaf spring, split shot crimper, Rapala lure tuning tool and light duty side cutters.

| Model No. | Item Description |
|---------------|--|
| RCP6 | 6-1/2" Fisherman's Pliers |
| RCP8 | 8-1/2" Fisherman's Pliers |
| RPLD-I | 6-1/2" Pliers 12 Piece Retail Display (see page 125) |



6-1/2" CURVED FISHERMAN'S PLIERS

Curved nose model helps get at hard to reach hooks. Durable nickel plated carbon steel, co-molded handles with leaf spring, split shot crimper, Rapala lure tuning tool and light duty side cutters.

| Model No. | Item Description |
|--------------|----------------------------------|
| RCPC6 | 6-1/2" Curved Fisherman's Pliers |



4" PANFISH PLIERS

Narrow gripping nose provides excellent control and reach for hooks and lures inside small fish. Durable nickel plated carbon steel, leaf spring and co-molded handles for a secure grip.

| Model No. | Item Description |
|---------------|--|
| RPP4 | 4" Panfish Pliers |
| RPP4-B | 16 Piece Retail Display (see page 125) |

11" PLIERS

Reach deep hooked baits and hard to reach hooks with ease. Co-molded handles for a secure grip. Light duty line and hook side cutter. Nickel plated carbon steel construction.

| Model No. | Handle Color | Item Description |
|---------------|--------------|-----------------------|
| SACP11 | White | 11" Angler's Pliers |
| RCP11 | Black | 11" Long Reach Pliers |

11" ANGLER'S PLIERS

11" LONG REACH PLIERS



ANGLER'S PLIERS

Durable nickel plated carbon steel, co-molded handles with leaf spring, split shot crimper, Rapala lure tuning tool and light duty side cutters.

| Model No. | Item Description |
|----------------|--|
| SACP6 | 6-1/2" Angler's Pliers |
| SACP6-B | 12 Piece Retail Display (see page 125) |
| SACP8 | 8-1/2" Angler's Pliers |
| SACP8-B | 12 Piece Retail Display (see page 125) |



6" EZ OPEN FORCEPS

One-handed operation via the locking ratchet clamp allows user to squeeze handles to open, apply and then squeeze to lock. Serrated jaws & line scissor. Tin-alloy plated 420 stainless steel.

| Model No. | Item Description |
|----------------|--|
| REOF6 | 6" EZ Open Forceps |
| REOF6-B | 36 Piece Retail Display (see page 126) |



FISHING FORCEPS

Must-have tool for removing hooks, rigging and knot tying. Corrosion resistant stainless steel with soft-grip locking handles and oversize finger holes. Built-in scissor for cutting line and adjustable hand lanyard.

| Model No. | Item Description |
|---------------|--------------------------------|
| RFCP-5 | 5-1/2" Stainless Steel Forceps |
| RFCP-7 | 7-1/2" Stainless Steel Forceps |



7" ANGLER'S SIDE CUTTER

Designed to cut light hooks and light wire leaders. Durable nickel plated carbon steel lanyard ready, co-molded handles for a secure grip.

| Model No. | Item Description |
|--------------|-------------------------|
| SAS7C | 7" Angler's Side Cutter |



ANGLER'S HEAVY-DUTY SPLIT RING PLIERS

Offset tool design makes fast work of changing out split rings and hooks. Large, spring-loaded co-molded handles make one-handed operation a breeze.

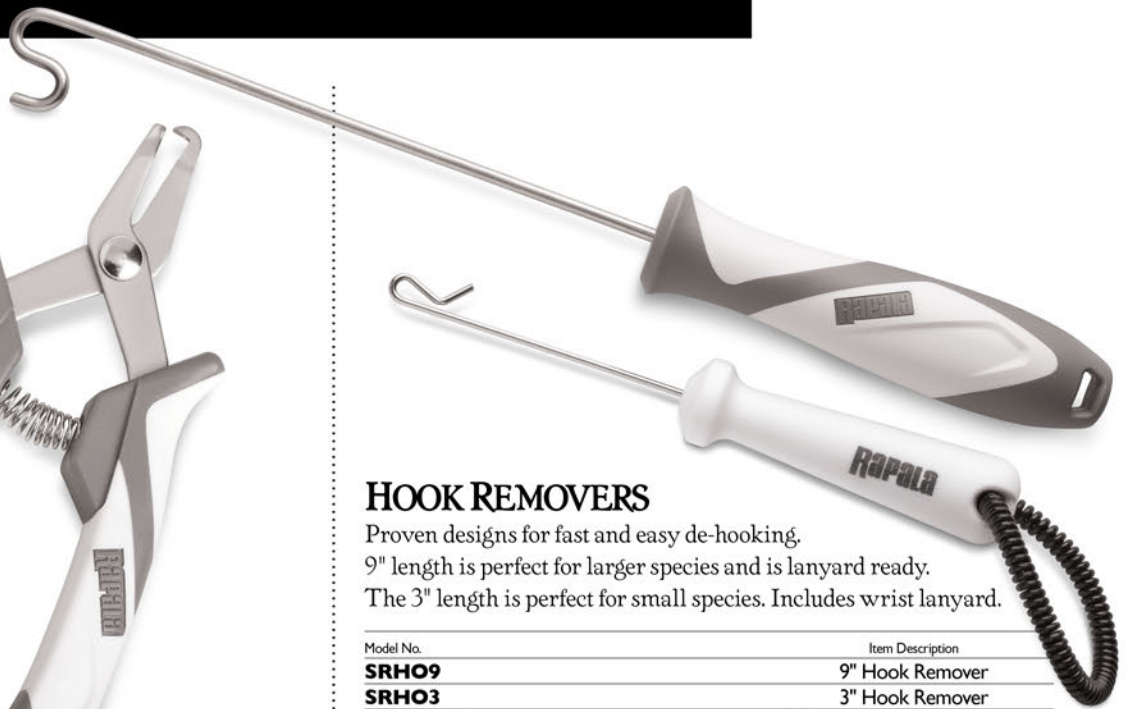
| Model No. | Item Description |
|----------------|---------------------------------------|
| SAHDSRP | Angler's Heavy-Duty Split Ring Pliers |



MINI SPLIT RING PLIERS

Compact stainless steel construction. Offset tool design makes it a snap to change out or replace hooks. Soft grip handles with leaf spring for easy one-handed operation. Includes wrist lanyard.

| Model No. | Item Description |
|-------------|------------------------|
| RMSP | Mini Split Ring Pliers |



HOOK REMOVERS

Proven designs for fast and easy de-hooking. 9" length is perfect for larger species and is lanyard ready. The 3" length is perfect for small species. Includes wrist lanyard.

| Model No. | Item Description |
|----------------|--|
| SRHO9 | 9" Hook Remover |
| SRHO3 | 3" Hook Remover |
| SRHO3-B | 12 Piece Retail Display (see page 125) |



The slotted 45 degree angled tube improves leverage and ensures proper hook position for easy removal.

MINI HOOK REMOVER

Traditional "trigger" design gives the user leverage and agility to remove deep set hooks. Stainless steel, corrosion resistant construction. Includes adjustable wrist lanyard.

| Model No. | Item Description |
|--------------|-------------------|
| RHR-M | Mini Hook Remover |



4" HOOK FILES

4" double-sided, ultra-fine cutting edge restores hooks to a razor-sharp point for premium penetration. Made from high-carbon steel, protected with a silicone treatment. Comfortable plastic handle.

| Model No. | Item Description |
|-----------------|--|
| SRHCF4 | 4" White Hook File |
| SRHCF4-B | 12 Piece Retail Display (see page 125) |
| RHCF4 | 4" Black Hook File |
| RHCF4B | 12 Piece Retail Display (see page 125) |



FISHERMAN'S MULTI-TOOL

The Fisherman's Multi-Tool combines the most commonly used tools by an angler into one convenient package. Die-cast metal frame with soft grip handle for a secure and comfortable grip.



**RETRACTABLE
LINE SCISSORS**



**RETRACTABLE
JIG EYE PUNCH**



**MULTI-SIZE
LINE THREADER**



**CARABINER
CLIP**



**BEVERAGE
WRENCH**

Model No.
RFMT

Item Description
Fisherman's Multi-Tool



FISHING CLIPPER

A "can't live without" tool, perfect for cleaning up tag ends on knots and general line cutting. Built-in Rapala lure tuning tool, swing out line pick & cutting knife. Clipper only 36 piece bulk option.

| Model No. | Item Description |
|--------------|--|
| RFC-1 | Fishing Clipper & Neck Lanyard |
| RCD-2 | 36 Piece Display-Clipper only (see page 125) |



PINCH TOOL COMBOS

Stainless steel, lightweight and tough. The clipper pinch tool makes fast work of trimming line. The jig eye punch busts out jig eyes and assists in changing hooks. The RSSPTCL has a long lasting LED UV light for charging glow lures.

| Model No. | Item Description |
|----------------|--|
| RSSPTCL | Stainless Steel Line Nipper, Jig Eye Punch, LED UV Light & Lanyard |
| RSSLN-B | 36 Piece Display-Line Clipper only (see page 126) |



7" ELITE SCISSORS

CERAKOTE

Armed with high performance, lightweight Cerakote® coating which protects against abrasion, corrosion & UV rays. The Elite Scissors' serrated blades cut all braid, monofilament and fluorocarbon line. Side cutter blades cut light wire up to 15 lbs. Spring loaded for easy one-hand operation & sliding lock for safe storage. Robust, comfortable ergonomic handle design & lanyard ready.

| Model No. | Item Description |
|--------------|-------------------|
| RESS7 | 7" Elite Scissors |



PRECISION LINE SCISSORS

Super lines are tough on a pair of traditional scissors, dulling the blades in record time. The Precision Line Scissors excel at cutting and trimming micro super lines, as well as all other fishing lines. Featuring stainless steel blades with premium titanium coating that extends life up to 15X longer than other models. Spring loaded for one-hand operation. Off-set for tight precision cuts. Ergonomic design and sliding lock for storage and safety.

| Model No. | Item Description |
|-------------|-------------------------|
| RPLS | Precision Line Scissors |

US PATENT NUMBER D835,484



Retractable/Hidden Cutting Area for Safety

RETRACTABLE LINE SCISSOR

Convenient, easy-to-use, compact design. Super sharp blades easily cut small braid and nylon fishing line. Simply slide line into "V" cavity and squeeze red handles. Carabiner securely connects anywhere for quick access.

| Model No. | Item Description |
|-------------|---------------------------|
| RRLS | Retractable Line Scissors |



EZ STOW LINE SCISSOR

Retractable cutting blades with serrated cutting edge grip and effortlessly cut tough braided line. Always at the ready with the included neck lanyard.

| Model No. | Item Description |
|-------------|----------------------|
| RSLS | EZ Stow Line Scissor |



SUPER LINE SCISSORS

Serrated cutting edge is specially designed to grip and hold tough braided line for easy, non-slip cutting. Stainless steel construction with oversized finger holes for ease of use. Choose White or Black.

| Model No. | Handle Color | Item Description |
|----------------|--------------|--|
| SRLS | White | Super Line Scissors |
| SRSD- I | White | 32 Piece Retail Display (see page 125) |
| RLS | Black | Super Line Scissors |
| RSD- I | Black | 32 Piece Retail Display (see page 125) |



FISH AND GAME SHEARS

Great for heavy leverage lopping to fine detail trimming. Truly multi-use, it separates for a straight knife and serrated knife/fish scaler and bottle opener/bone cracker and vegetable peeler. 2-piece design allows for easy cleaning. Oversize grip is ideal size for large hands or working with gloves on.

| Model No. | Item Description |
|---------------|--|
| RFGS | Fish Game and Shears |
| RFGS-B | 18 Piece Retail Display (see page 125) |



60" RETRACTABLE RULER

Spring loaded retractable ruler for easy storage. Oversized, easy-to-read numbers, in 1/2" increments up to 60." Non-reflective surface ensures length shows in photos. Made from a long-lasting, UV protected, waterproof material. Flip-up nose board.

| Model No. | Item Description |
|----------------|-----------------------|
| RRRUL60 | 60" Retractable Ruler |



60" MAGNUM® AND 24" FOLDING RULER

Large, easy-to-read, molded in numbers. Mounting bracket holes. Both fold for storage. Inch & centimeter measurements.

| Model No. | Item Description |
|---------------|--------------------------|
| RMFR | 60" Magnum Folding Ruler |
| RFDRLR | 24" Folding Ruler |

NEW

R12 LITHIUM

R12 LITHIUM AERATOR

- Provides up to 35 hours of runtime on a single 2Ah Lithium ION battery charge
- High/Low and interval air output settings allow user to adjust airflow to accommodate different live bait requirements
- On-board LED power gauge to monitor battery status
- Flexible air hose and high output aerator stone
- Include one SmartHub® Flat Mount and one SmartHub® Bucket Mount with mounting screws and high-strength 3M™ VHB™ tape
- Two year warranty

| Model No. | Item Description |
|--------------|---------------------|
| R12LA | R12 Lithium Aerator |

Battery & Charging Base Not Included



SmartHub® Flat Mount



SmartHub® Bucket Mount



Battery Not Included



Water Activated Switch



FLOATING AERATOR

Water activated switch, 18-hour continuous run time or 36 hours in 15 minute intervals. Aerates 1.5 liters (0.4 gal.) per minute. Air release stone gently mixes air into the water. Ideal for most bait storage containers. 3 C batteries (not included)

| Model No. | Item Description |
|-----------------|------------------|
| RFLAERTR | Floating Aerator |



BATTERY AERATOR

Quiet, powerful diaphragm pump. 24" hose with filter stone for quality aeration. Runs on 2 C batteries (not included)

| Model No. | Item Description |
|-----------------|------------------|
| BAERTR-C | Battery Aerator |



Built In Hook Sharpener

LINE REMOVER

A “must-have” tool for any angler's arsenal. This handy tool strips line via enhanced stripper wheel, at 5 feet of line per second. High torque motor should last a lifetime. Powered by 4 AA batteries (not included), this handy tool also features a built-in hook sharpener with fine grade aluminum oxide stone. Next time, you'll look forward to changing your line.

| Model No. | Item Description |
|------------|----------------------------------|
| RLR | Line Remover with Hook Sharpener |



Spinning Rod Placement



Baitcast Rod Placement

DIGITAL LINE COUNTER

Rod mount holds line counter securely to your baitcast or spinning rod. For casting, trolling or spooling line for consistency, the depth alarm sounds when your desired line distance is reached. Digital back-lit display has imperial and metric display options. Depth lock saves and displays the line distance with one touch. Line guide with release quickly disengages line from wheel when needed. Battery status indicator. Runs on 2 AAA batteries (not included)

| Model No. | Item Description |
|---------------------------|----------------------|
| RDLC | Digital Line Counter |
| US PATENT NUMBER D950,004 | |



COMPACT LINE REMOVER

Measuring only 5" long the Rapala Compact Line Remover is convenient to have close at hand and store. The high torque motor removes 6 feet of line per second and the dual-direction design allows for left-and-right handed operation. Requires 2 AA batteries (not included) and has an easy-to-access battery compartment.

| Model No. | Item Description |
|-------------|----------------------|
| RCLR | Compact Line Remover |



LIGHTED LINE COUNTER

Fish at controlled depths while using a standard baitcasting reel with this line counter. You'll be able to set your bait at the right depth every time, keeping you in the strike zone for improved success. The lighted display measures in feet and is easily read in low light conditions. Attaches with its heavy-duty, padded adjustable screw clamp. Accurate to 999 feet with minimal line slippage. Push button reset, line lock that cradles your line and automatic line release that engages when fish strikes. 1 CR1632 button battery (not included).

| Model No. | Item Description |
|-------------|----------------------|
| RLLC | Lighted Line Counter |



ORIGINAL



MINI

CHARGE 'N GLOW SERIES

The Charge 'n Glow charges glow hard baits, soft baits, spoons & jigs magnificently. Small, compact Mini is ideal for small lures & jigs.

Both feature:

- Push button power
- Spring loaded case with lock

ORIGINAL 28 Lumens

- 8 Ultraviolet LED bulbs
- Powered by 3 AAA batteries (not included)

MINI

- 4 Ultraviolet LED bulbs
- Powered by 1 AAA battery (not included)
- Quick release neck lanyard

| Model No. | Item Description |
|-------------|---------------------|
| RGC | Charge 'n Glow |
| RMGC | Mini Charge 'n Glow |

Batteries Not Included



LOCK 'N HOLD ROD RACK

Long lasting jaws hold many rod blank sizes. 16" on center interlocking system. Base grip holder supports rods eliminating rod eyelet damage. Mounts vertical or horizontal.

| Model No. | Item Description |
|---------------|-----------------------|
| PGRH-6 | Lock 'n Hold Rod Rack |

US PATENT NUMBER 7,503,459



METAL STRINGER

Corrosion resistant, 5' 6" vinyl coated stainless steel cable is rigged with nine solid brass sliding-sleeve clasps and two swivel end clasps. Rated for 300 lb. capacity.

| Model No. | Item Description |
|--------------|------------------|
| RMSTR | Metal Stringer |



MAGNETIC RELEASE

Connect tool to the heavy-duty split ring and carabiner clip to D-ring or belt. Break-away magnets hold up to 6.6 lbs. (3kgs).

| Model No. | Item Description |
|-------------|------------------|
| RMCR | Magnetic Release |



RETRACTABLE LANYARD

360° rotating, quick release carabiner with split ring for tool attachment.

| Model No. | Cord Length | Hang Weight Capacity | Item Description |
|------------|-------------|----------------------|---------------------|
| RL3 | 28" | 6 oz. | Retractable Lanyard |
| RL5 | 36" | 10 oz. | Retractable Lanyard |



FISH COUNTER

Easily keep track of your catch for the day or the whole trip. Easy one-hand operation & fixed loop to hang on hook or belt. 4-Figure register, automatic reset.

| Model No. | Item Description |
|-------------|------------------|
| RFCR | Fish Counter |



RGL-SB



RGL-FT

RAPALA® GIANT LURES

Display sized Original Floating® lures in the iconic Rapala box. Perfect home decor, use for trophies or sign it to give as a gift.

| Model No. | Lure Style | Color |
|---------------|-----------------------|--------------|
| RGL-SB | 29" Original Floating | Silver/Black |
| RGL-FT | 29" Original Floating | Firetiger |



FLOATER BOTTLE OPENER

Award-winning opener that features the legendary Original Floating® Rapala.

| Model No. | Item Description |
|---------------------|--|
| RGWOPNR | Original Floater Bottle Opener |
| RGWBULKOPNRS | 36 Piece Retail Display (see page 126) |



RAPALA® DECALS

Vinyl Rapala logos, walleye, bass or pike decals, slogan bumper stickers or a handy 36" adhesive ruler for fish house or boat.

| Model No. | Item Description |
|-------------|---------------------------|
| RDDI | Logo Decals-3 sizes |
| RWDI | Walleye Decal |
| RBDI | Bass Decal |
| RPDI | Pike/Musky Decal |
| RFDI | Take a Fish Boating Decal |
| RHDI | Drive Home Happy Decal |
| RAFR | 36" Adhesive Ruler |



HOOK SHARPENER

Retractable design for compact storage. Fine grit aluminum oxide stone. Neck lanyard.

| Model No. | Item Description |
|---------------|------------------|
| RHKS-I | Hook Sharpener |



FISHERMAN'S GLOVES

Durable latex coating provides excellent non-slip fish control and added protection from fish teeth, gill plates and dorsal fins. Designed to float, the cotton/polyester shell has ultimate functionality & comfort. Machine washable, drip dry.

| Model No. | Color | Item Description |
|----------------|-------|--------------------------------|
| RFSHGL | Black | Large Fisherman's Gloves |
| RFSHGXL | Black | Extra Large Fisherman's Gloves |
| SAGL | White | Large Angler's Gloves |
| SAGXL | White | Extra Large Angler's Gloves |

Not for use as a fillet glove.



LURE WRAPS

Sewn-in hook attaches to rod's bait keeper to prevent the wrap from slipping up the rod exposing lure. Durable nylon covers the lure and hooks to protect from snags and tangles. 3 pack.

| Model No. | Item Description |
|--------------|-------------------------|
| RLWRS | Small Lure Wrap (3 pk) |
| RLWRM | Medium Lure Wrap (3 pk) |
| RLWRL | Large Lure Wrap (3 pk) |



LIGHTED MARKER BUOY

Water activated, two bright LED bulbs with 60 hour run time on 2 AA batteries (not included). Enclosed on/off switch for daytime use. Compact low-profile shape reduces unnecessary line release in wavy conditions. 50' cord with 6 oz. flexible weight keep it in place.

| Model No. | Item Description |
|-------------|---------------------|
| RLMB | Lighted Marker Buoy |



Tools not included

MAGNETIC TOOL HOLDERS

The Magnetic Tool Holder's durable collar & magnetic backer securely hold tools. Mounts on any flat surface in boat, fish house, or shop. Includes screws or high-strength bonding tape for easy installation. (Tools not included)

| Model No. | Item Description |
|--------------|--------------------------|
| MTH2 | Two Place Holder |
| MTH3 | Three Place Holder |
| SMTH3 | White Three Place Holder |



MAGNETIC TOOL HOLDER COMBO

7" Side Cutter, Super Line Scissors & Fisherman's Pliers, a great collection of the most used tools in most boats. Durable collar & magnetic backer securely hold tools in place. Includes high strength bonding tape and screws for mounting options.

| Model No. | Item Description |
|---------------|-----------------------|
| MTHK-2 | Magnetic Tool Combo 2 |



Includes Sheath

PERFORMANCE TOOL COMBO

These are essential tools that every angler should have! 6" Mag Spring Pliers have magnets that keep the pliers open and ready. The Precision Line Scissors easily cut all your traditional fishing lines. The 6" Floating Fish Gripper assists when landing and releasing your catch without harm to you or the fish.

| Model No. | Item Description |
|--------------|------------------------|
| RPRTC | Performance Tool Combo |



FLOATING FISH GRIPPER/SCALE COMBO

Catch and release, but not before you find out how much they weigh. Safely land with the 9" Floating Fish Gripper, then record their weight with the 50 lb. Mini Digital Scale.

| Model No. | Item Description |
|---------------|-----------------------------------|
| RFFGSC | Floating Fish Gripper/Scale Combo |



Jig Eye Punch

PANFISH TOOL COMBO

The perfect set of essential tools for handling panfish. Combo includes Super Line Scissors, 4" Panfish Pliers and a Mini Hook Remover.

| Model No. | Item Description |
|--------------|--------------------|
| RPFTC | Panfish Tool Combo |



FISHERMAN'S TOOL COMBO

A great starter set of tools every angler can use. Super Line Scissors, 8-1/2" Fisherman's Pliers, a 25 lb. Digital Scale and 24" Folding Ruler.

| Model No. | Item Description |
|--------------|------------------------|
| RFMTC | Fisherman's Tool Combo |



FISHERMAN'S FILLET COMBO

6" Falcon Fillet comes with a blade sharpener built into the sheath. The Fillet Fork keeps the fish in place while working and the Fillet Glove protects against cuts.

| Model No. | Item Description |
|-------------|--------------------------|
| RFFC | Fisherman's Fillet Combo |



CLIPPER COMBO

Clipper with built-in Lure Tuning Tool, swing-out Line Pick and Cutting Knife, Hook File, Jig Eye Punch, Neck Lanyard & large Split Ring.

| Model No. | Item Description |
|---------------|------------------|
| RCLP-1 | Clipper Combo |



MINI PLIERS & MINI SIDE CUTTER

Double Leaf Springs for one-handed operation. Includes Combo Sheath.

| Model No. | Item Description |
|------------------|------------------------------|
| RTC-MPMSC | Mini Plier/Side Cutter Combo |



COMBO PACK

25 lb. Scale, 6-1/2" Fisherman's Pliers, 5-1/2" Forceps, Rapala Clipper, Sheath & Lanyard

| Model No. | Item Description |
|------------------|------------------|
| RTC-6PFSC | Combo Pack |



TOOL COMBO

8-1/2" Stainless Steel Pliers, 5-1/2" Stainless Steel Fishing Forceps, Combo Sheath & Wrist Lanyard.

| Model No. | Item Description |
|--------------|------------------|
| RTC-1 | Tool Combo |



PEDESTAL TOOL COMBO

Pedestal Tool Holder, 6-1/2" Fisherman's Pliers & Super Line Scissors.

| Model No. | Item Description |
|-------------|---------------------|
| RPTC | Pedestal Tool Combo |



COMBO PACK

6-1/2" Fisherman's Pliers, Falcon Fillet Knife/Sheath, Rapala Clipper & Lanyard.

| Model No. | Item Description |
|-------------------|------------------|
| RTC-6PI36C | Combo Pack |



FILLET TOOL COMBO

8-1/2" Stainless Steel Pliers & 6" Soft Grip Fillet with Sheath.

| Model No. | Item Description |
|------------------|-------------------|
| RPLR8-706 | Fillet Tool Combo |



PLIERS & SUPER LINE SCISSORS

6-1/2" Fisherman's Pliers, Super Line Scissors & Combo Sheath.

| Model No. | Item Description |
|------------------|---------------------|
| RTC-6SPLS | Plier/Scissor Combo |



COMBO PACK

6-1/2" Fisherman's Pliers, Rapala Clipper, Jig Eye Punch, Hook Sharpener & Lanyard.

| Model No. | Item Description |
|------------------|------------------|
| RTC-6PCHS | Combo Pack |

RAPALA® BULK SERIES

Impulse items offer great value and generate increased profits. Bulk up your store with these checkout aisle champions and watch the sales add up at your register.



CERAMIC BAIT & UTILITY KNIVES

2X sharper than steel.
4" ceramic blade & sheath.

| Model No. | Item Count |
|------------------------|------------|
| RCBKW4B (White) | 24 pieces |
| RCUKB4B (Black) | 24 pieces |



HAWK FILLET KNIVES

Stainless steel knives with disposable sheath.

| Model No. | Blade Length | Item Count |
|--------------|--------------|------------|
| I24BX | 4" | 36 pieces |
| I26BX | 6" | 36 pieces |
| I28BX | 8" | 36 pieces |



SALTWATER FILLET KNIVES

White handle 7" stainless steel blade fillet knives with easy to clean sheaths.

| Model No. | Item Count |
|---------------|------------|
| RSF7BX | 24 pieces |



4" KNIVES

4" stainless steel blades. Sheaths. White bait knife blade has serrated back.

| Model No. | Item Count |
|-----------------------|------------|
| RSB4BX (White) | 24 pieces |
| RUK4BX (Black) | 24 pieces |



FILLET FORK

Secures fish in place as you fillet. Stainless steel forks with heavy-duty comfort grip handles.

| Model No. | Item Count |
|---------------|------------|
| RFF2-B | 24 pieces |



ANGLER'S PLIERS

Durable nickel plated carbon steel. Lanyard ready comfort grip handles.

| Model No. | Length | Item Count |
|----------------|--------|------------|
| SACP6-B | 6-1/2" | 12 pieces |
| SACP8-B | 8-1/2" | 12 pieces |



PANFISH PLIERS

Compact narrow gripping nose provides control & reach when removing hooks from panfish.

| Model No. | Item Count |
|---------------|------------|
| RPP4-B | 16 pieces |



FISHERMAN'S PLIERS

6-1/2", nickel plated carbon steel, leaf spring, crimper & side cutter.

| Model No. | Item Count |
|---------------|------------|
| RPLD-I | 12 pieces |



SUPER LINE SCISSORS

Serrated edge for cutting braid and other line.

| Model No. | Item Count |
|-----------------------|------------|
| RSD-I (Black) | 32 pieces |
| SRSD-I (White) | 32 pieces |



FISH & GAME SHEARS

Two-piece straight & serrated side knife edges, lopper, scaler, bone cracker.

| Model No. | Item Count |
|---------------|------------|
| RFGS-B | 18 pieces |



FISHING CLIPPER

Built-in lure tuning tool, swing-out line pick and cutting knife.

| Model No. | Item Count |
|--------------|------------|
| RCD-2 | 36 pieces |



TWO-STAGE SHARPENERS

Fixed fine & coarse ceramic sticks (SH2).

| Model No. | Item Count |
|---------------|------------|
| RSHD-I | 36 pieces |



HOOK FILE

Double sided 4" ultra-fine carbon steel file.

| Model No. | Item Count |
|-------------------------|------------|
| RHCF4B (Black) | 12 pieces |
| SRHCF4-B (White) | 12 pieces |



3" HOOK REMOVER

Fast and easy de-hooking, compact, coil wrist lanyard.

| Model No. | Item Count |
|----------------|------------|
| SRHO3-B | 12 pieces |



STAINLESS STEEL LINE CLIPPER

Perfect for tag ends and general line cutting.

| Model No. | Item Count |
|----------------|------------|
| RSSLN-B | 36 pieces |



JAW SPREADERS

Stainless steel spring for one-handed operation. Clamps lock for storage.

| Model No. | Length | Item Count |
|----------------|--------|------------|
| RJSS6-B | 6" | 42 pieces |
| RJSS8-B | 8" | 42 pieces |



FLOATING FISH GRIPPER

Quick release jaws hold strong yet release easily.

| Model No. | Length | Item Count |
|----------------|--------|------------|
| RFFG6-B | 6" | 16 pieces |
| RFFG9-B | 9" | 20 pieces |



6" EZ OPEN FORCEPS

Spring loaded, locking ratchet clamp for smooth one-handed operation.

| Model No. | Item Count |
|----------------|------------|
| REOF6-B | 36 pieces |



LED UV PINCH LIGHT

Pinch light features excellent lighting power to charge up glow baits with ease.

| Model No. | Item Count |
|----------------|------------|
| RLUPL-B | 48 pieces |



RAPALA BOTTLE OPENER

The iconic, award-winning Original Floater® opener makes a great gift.

| Model No. | Item Count |
|---------------------|------------|
| RGWBulkOpnrs | 36 pieces |



RAPALA KEY RING

Logo-ed Rattlin' Rapala lure with a keyring instead of hooks.

| Model No. | Item Count |
|------------------------|------------|
| RGWBulkKeyRings | 48 pieces |

RAPALA® BULK TOOL DISPLAY

Attention to detail gets attention at retail. A bulk tool display solution that showcases your collection of select Rapala bulk products. Designed to easily stock any size Rapala bulk buckets on two levels with easy access to product for your consumer.



The 3-Piece display hangs on a custom manufactured bar that locks into Lozier® gondolas. 48" wide x 19" high x 14" deep.

RAPALA®

10395 Yellow Circle Drive · Minnetonka, MN 55343
In Canada: 1350 Phillip Murray Avenue · Oshawa, Ontario, L1J 6Z9
Specifications subject to change without notice